

| | | | |
|--|------------------------|-----------------------------|---|
| WAAS CH 87038 W19A | APP CRS 188° | Rwy Idg TDZE Apt Elev | 4346 685 685 |
|--|------------------------|-----------------------------|---|

RNAV (GPS) RWY 19

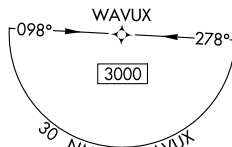
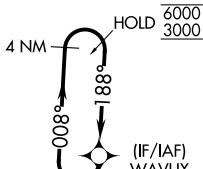
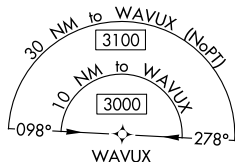
PICKAWAY COUNTY MEML (CYO)

RNP APCH

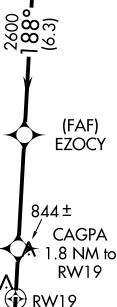
Baro-VNAV and VDP NA when using Rickenbacker Intl altimeter setting. For uncompensated Baro-VNAV systems, LNAV/VNAV NA below -16°C or above 54°C. Use Chillicothe altimeter setting, when not received use Rickenbacker Intl altimeter setting and increase LPV DA to 985 feet, LNAV/VNAV DA to 1150 feet, and all visibilities ¼ SM. Increase all MDAs 60 feet and Cats C and D visibility ¼ SM. Circling Rwy 1 NA at night. Rwy 19 helicopter visibility reduction below ¾ SM NA.

MISSED APPROACH:
Climb to 3000 direct
RAJAH and hold.

| | | |
|------------------------------|--|---------------------------------|
| RZT AWOS-3 119.225 | COLUMBUS APP CON 134.0 279.6 | UNICOM 122.7 (CTAF) 0 |
|------------------------------|--|---------------------------------|

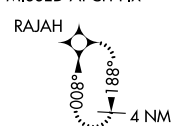


1916 Δ



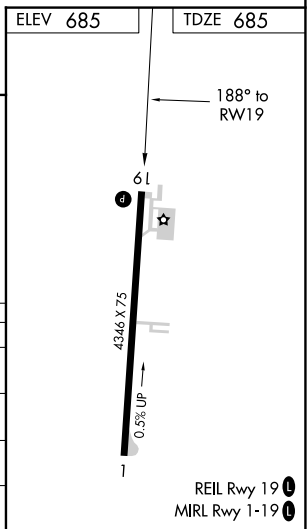
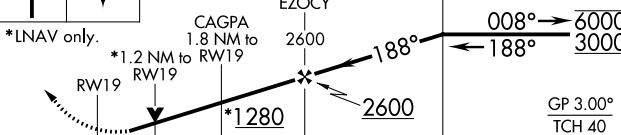
Δ 989

MISSED APCH FIX



BUCKEYE MOA

3000 RAJAH VGS1 and RNAV glidepath not coincident (VGS1 Angle 3.00°/TCH 24). 4 NM Holding Pattern



| CATEGORY | A | B | C | D |
|-----------------|-----------------------|-----------------------|-----------------------------|-----------------------|
| LPV DA | | 935-7/8 | 250 (300-7/8) | |
| LNAV/VNAV DA | | 1100-13/8 | 415 (500-13/8) | |
| LNAV MDA | 1100-1 | 415 (500-1) | 1100-13/8 | 415 (500-13/8) |
| CIRCLING | 1180-1 495 (500-1) | 1200-1 515 (600-1) | 1300-13/4 615 (700-13/4) | 1340-2 655 (700-2) |

REIL Rwy 19 **0**
MIRL Rwy 1-19 **0**

EC-2, 07 SEP 2023 to 05 OCT 2023

EC-2, 07 SEP 2023 to 05 OCT 2023