

WAAS CH 60941 W22A	APP CRS 227°	Rwy Idg TDZE Apt Elev	5004 799 800
--	------------------------	-----------------------------	---

RNAV (GPS) RWY 22

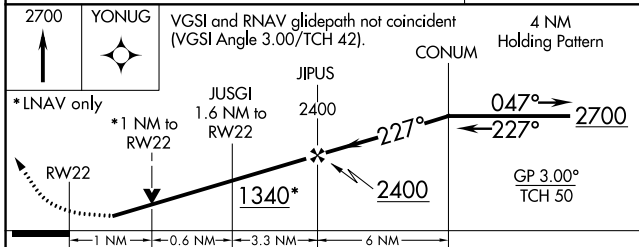
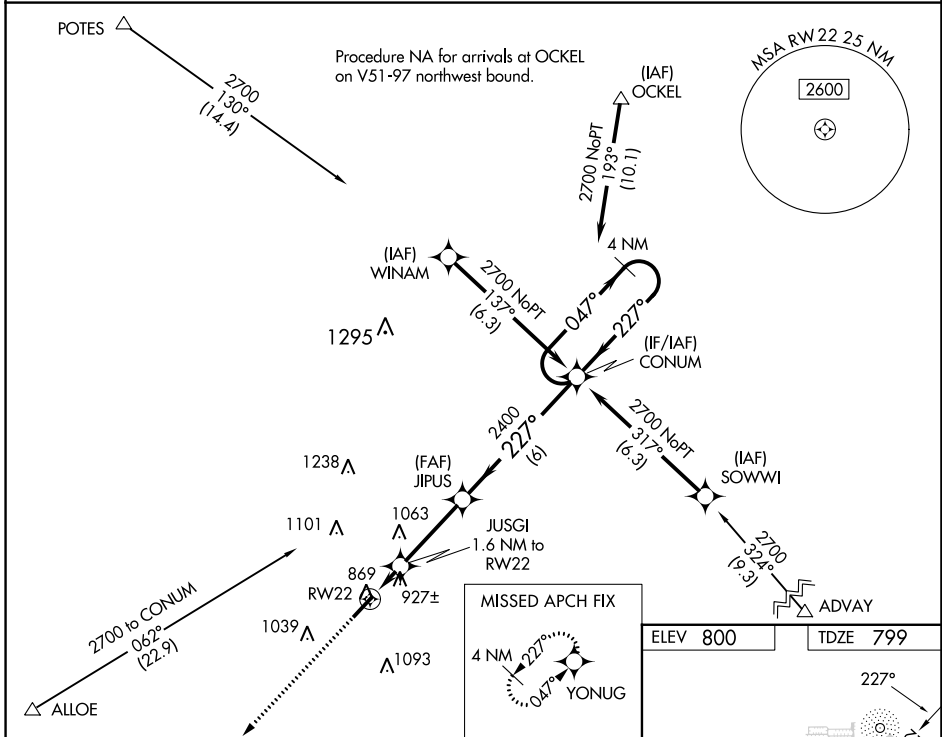
CRAWFORDSVILLE RGNL (CFJ)

RNP APCH.

▼ For uncompensated Baro-VNAV systems, LNAV/VNAV NA below -16°C or above 54°C. Baro-VNAV and VDP NA when using Greencastle altimeter setting. When local altimeter setting not received, use ▲ Greencastle altimeter setting; increase LPV DA to 1104 feet, LNAV/VNAV DA to 1115 feet; increase all MDA 60 feet and visibility Cats C and D ¼ SM. Rwy 22 helicopter visibility reduction below ¾ SM NA.

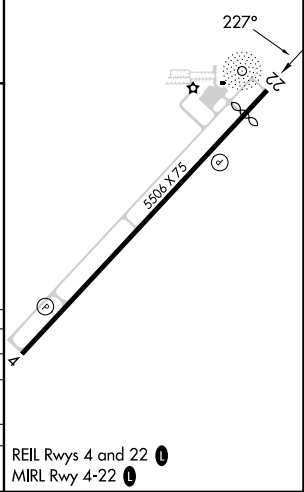
MISSED APPROACH: Climb to 2700 direct YONUG and hold.

AWOS-3PT 125.65	INDIANAPOLIS APP CON 119.05 317.8	UNICOM 122.8 (CTAF) 0
---------------------------	---	---------------------------------



ELEV 800	TDZE 799
----------	----------

CATEGORY	A	B	C	D
LPV DA		1052-1	253 (300-1)	
LNAV/VNAV DA		1063-1	264 (300-1)	
LNAV MDA	1180-1	381 (400-1)	1180-1½	381 (400-1½)
CIRCLING	1240-1 440 (500-1)	1260-1 460 (500-1)	1440-1¾ 640 (700-1¾)	1520-2¼ 720 (800-2¼)



EC-2, 07 SEP 2023 to 05 OCT 2023

EC-2, 07 SEP 2023 to 05 OCT 2023