

APP CRS	Rwy Idg	2801
019°	TDZE	1116
	Apt Elev	1116

RNAV (GPS) RWY 2

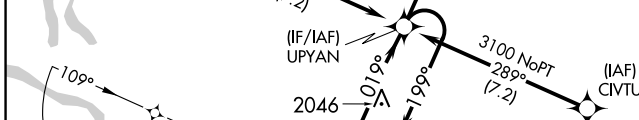
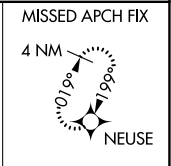
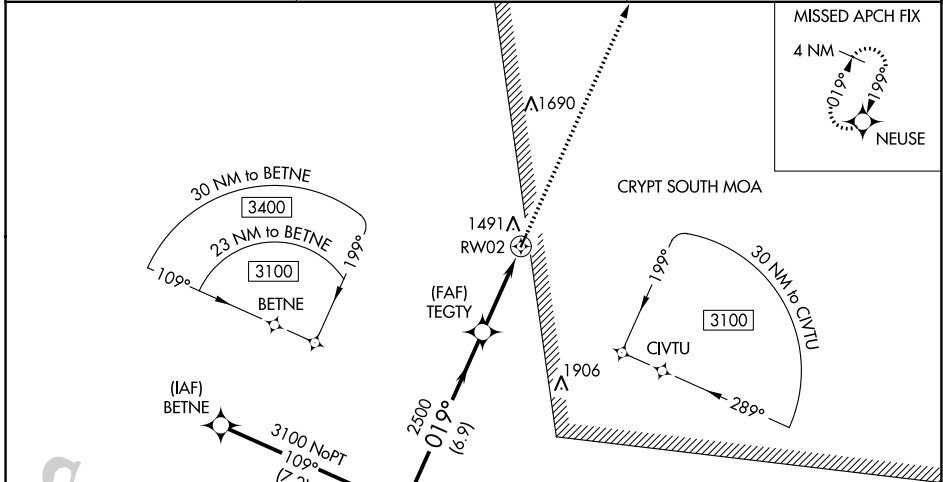
JAMES G WHITING MEML FLD (MEY)

RNP APCH - GPS.

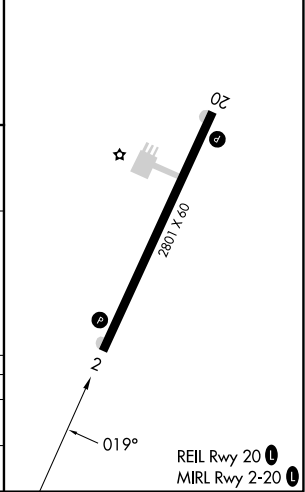
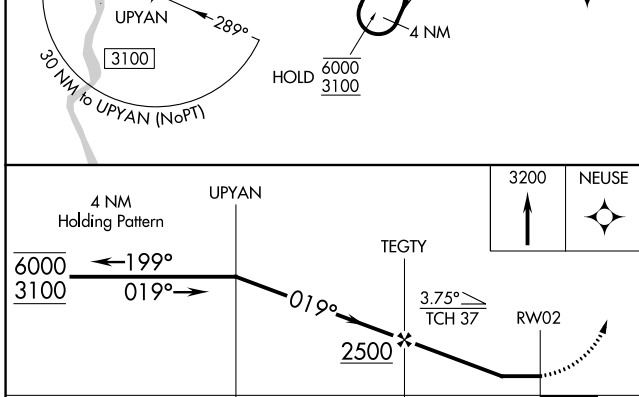
NA Procedure NA at night. Rwy 2 helicopter visibility reduction below 1 SM NA. Use Sioux City altimeter setting, when not received use Denison altimeter setting and increase all MDAs 20 feet and visibility LNAV Cat B ¼ SM, and visibility Circling Cat C ¼ SM.

MISSED APPROACH: Climb to 3200 direct NEUSE and hold.

SUX ASOS 119.45	SIOUX CITY APP CON ★ 124.6 307.0	UNICOM 122.8 (CTAF) 0
---------------------------	--	---------------------------------



ELEV 1116	TDZE 1116
-----------	-----------



CATEGORY	A	B	C	D
LNAV MDA	1840-1	724 (800-1)	1840-2 724 (800-2)	NA
C CIRCLING	1880-1 764 (800-1)	1940-1¼ 824 (900-1¼)	1980-2½ 864 (900-2½)	NA

NC-3, 07 SEP 2023 to 05 OCT 2023

NC-3, 07 SEP 2023 to 05 OCT 2023