

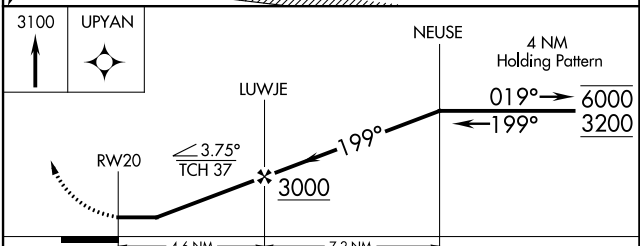
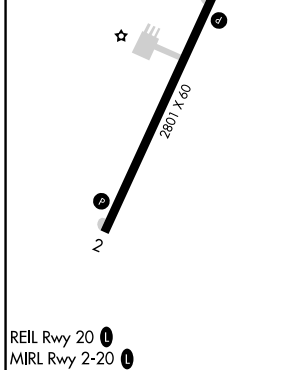
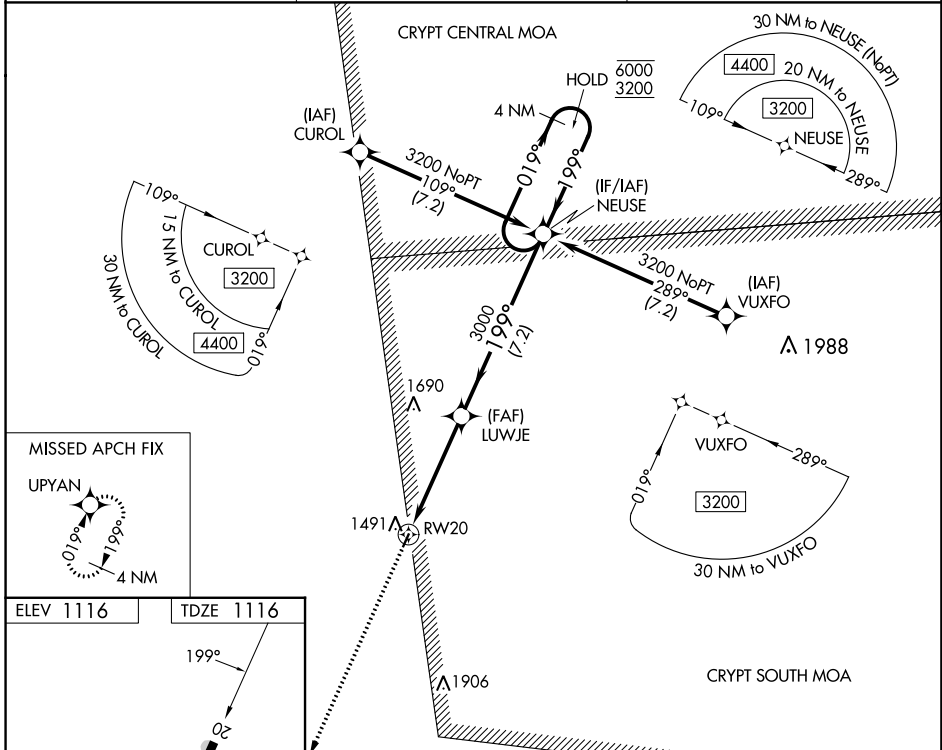
APP CRS	Rwy Idg	2801
199°	TDZE	1116
	Apt Elev	1116

RNAV (GPS) RWY 20

JAMES G WHITING MEML FLD (MEY)

RNP APCH - GPS.		MISSED APPROACH: Climb to 3100 direct UPYAN and hold.
<p>▼ Procedure NA at night. Rwy 20 helicopter visibility reduction below 1 SM NA.</p> <p>▲ NA Use Sioux City altimeter setting, when not received use Denison altimeter setting and increase all MDAs 20 feet and increase visibility LNAV Cat C ½ SM and visibility Circling Cat C ¼ SM.</p>		

SUX ASOS 119.45	SIoux CITY APP CON★ 124.6 307.0	UNICOM 122.8 (CTAF)
---------------------------	---	-------------------------------



CATEGORY	A	B	C	D
LNAV MDA	1860-1 744 (800-1)	1860-1¼ 744 (800-1¼)	1860-2 744 (800-2)	NA
C CIRCLING	1880-1 764 (800-1)	1940-1¼ 824 (900-1¼)	1980-2½ 864 (900-2½)	NA

NC-3, 07 SEP 2023 to 05 OCT 2023

NC-3, 07 SEP 2023 to 05 OCT 2023