

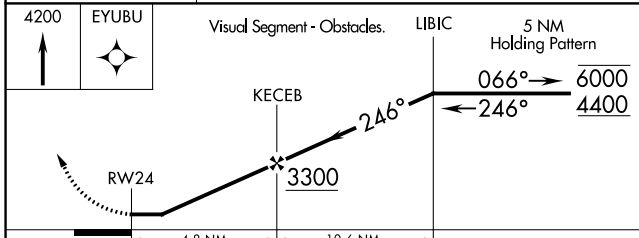
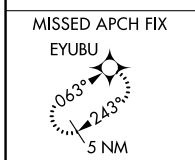
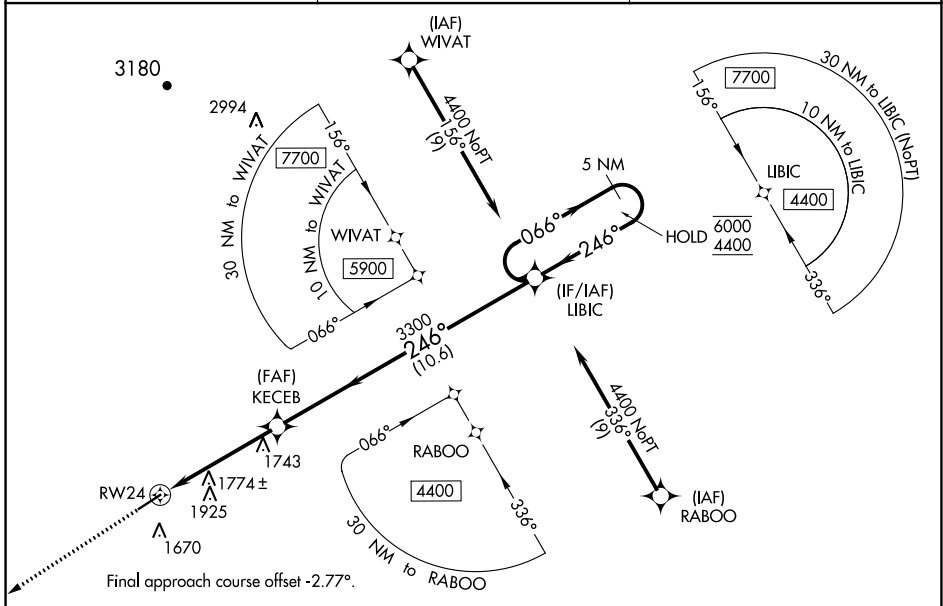
WAAS CH 49121 W24A	APP CRS 246°	Rwy Idg TDZE 1448 Apt Elev 1448
--	------------------------	---

RNAV (GPS) RWY 24

HABERSHAM COUNTY (AJR)

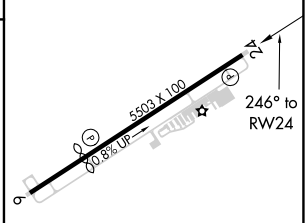
RNP APCH - GPS.		MISSED APPROACH: Climb to 4200 direct EYUBU and hold.
	Rwy 24 helicopter visibility reduction below 1 SM NA. Procedure NA at night.	

AWOS-3 119.175	ATLANTA CENTER 134.8 379.95	UNICOM 122.7 (CTAF) 0
--------------------------	---------------------------------------	---------------------------------



ELEV 1448	D	TDZE 1448
-----------	----------	-----------

CATEGORY	A	B	C	D
LP MDA	2000-1	552 (600-1)	2000-1 ⁵ / ₈	552 (600-1 ⁵ / ₈)
LNAV MDA	2040-1	592 (600-1)	2040-1 ³ / ₄	592 (600-1 ³ / ₄)
C CIRCLING	2100-1 652 (700-1)	2280-1 ¹ / ₄ 832 (900-1 ¹ / ₄)	2280-2 ¹ / ₂ 832 (900-2 ¹ / ₂)	2280-2 ³ / ₄ 832 (900-2 ³ / ₄)



MIRL Rwy 6-24 0

SE-4, 07 SEP 2023 to 05 OCT 2023

SE-4, 07 SEP 2023 to 05 OCT 2023