

LOC I-DSY 110.1 Chan 38	APP CRS 011°	Rwy Idg TDZE 253 Apt Elev 264
---	------------------------	---

ILS or LOC RWY 1

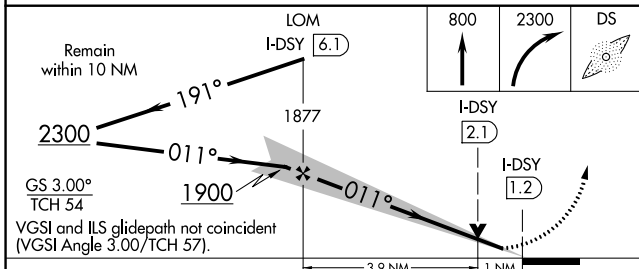
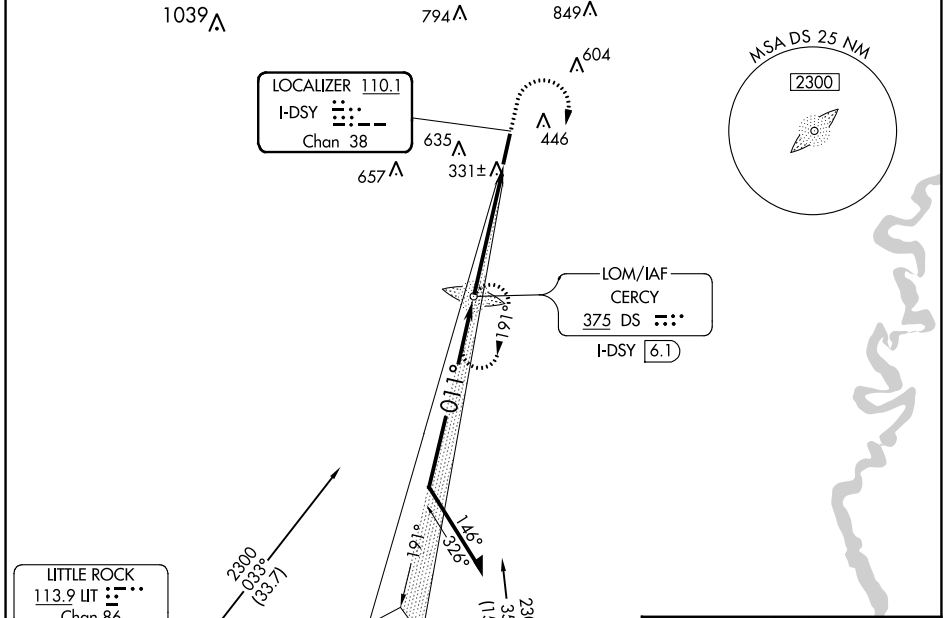
SEARCY MUNI (SRC)

NA Circling NA for Cats B and C west of Rwy 1-19. When local altimeter setting not received, use Bill and Hillary Clinton Nil/Adams Fld altimeter setting: increase DA to 542 feet; increase all MDAs 100 feet and increase S-LOC 1 and Circling Cat C visibility ¼ SM. VDP NA with Bill and Hillary Clinton Nil/Adams Fld altimeter setting. ADF required.

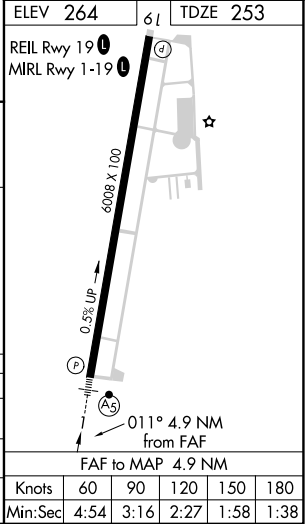


MISSED APPROACH: Climb to 800 then climbing right turn to 2300 direct CERCY LOM and hold.

AWOS-3PT 128.325	LITTLE ROCK APP CON 119.75 291.775	CLNC DEL 119.75	UNICOM 122.7 (CTAF)
----------------------------	--	---------------------------	-------------------------------



CATEGORY	A	B	C	D
S-ILS 1	453-½	200 (200-½)		NA
S-LOC 1	600-½	347 (400-½)		NA
CIRCLING	760-1	496 (500-1)	780-1½ 515 (600-1½)	NA



SC-1, 07 SEP 2023 to 05 OCT 2023

SC-1, 07 SEP 2023 to 05 OCT 2023