

WAAS CH 86224 W19A	APP CRS 191°	Rwy Idg TDZE 264 Apt Elev 264	6008
--	------------------------	---	-------------

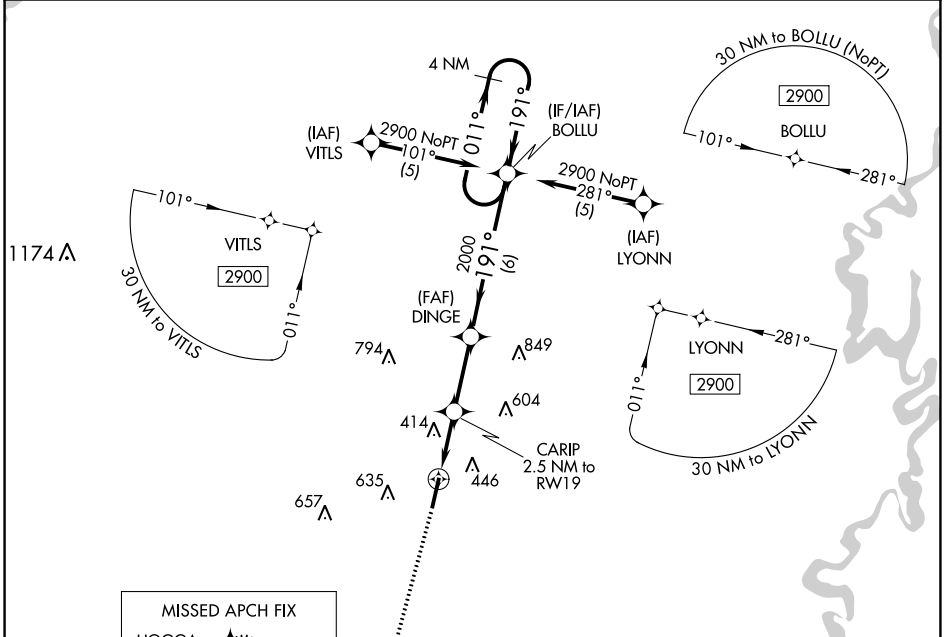
RNAV (GPS) RWY 19

SEARCY MUNI (SRC)

⚠ DME/DME RNP-0.3 NA. When local altimeter setting not received, use **Bill and Hillary Clinton Nil/Adams** Fld altimeter setting: increase LPV DA to 602 feet; increase all MDAs 100 feet and LNAV and Circling Cat C visibility ¼ SM. VDP NA with Bill and Hillary Clinton Nil/Adams Fld altimeter setting. Circling NA for Cats B and C west of Rwy 1-19.

MISSED APPROACH: Climb to 2300 direct HOGGA and hold.

AWOS-3PT 128.325	LITTLE ROCK APP CON 119.75 291.775	CLNC DEL 119.75	UNICOM 122.7 (CTAF) 0
----------------------------	--	---------------------------	---------------------------------



SC-1, 07 SEP 2023 to 05 OCT 2023

SC-1, 07 SEP 2023 to 05 OCT 2023

ELEV 264	TDZE 264			
2300 HOGGA	VGSI and RNAV glidepath not coincident (VGSI Angle 3.00/TCH 40).			
*LNAV only.	BOLLU Holding Pattern			
RWY 19	DINGE			
*1.2 NM to RWY 19	CARIP 2.5 NM to RWY 19			
1100	2000			
1.2	1.3			
2.7	6			
GP 3.00°	TCH 40			
CATEGORY	A	B	C	D
LPV DA	514-1	250 (300-1)		NA
LNAV/VNAV DA	NA			
LNAV MDA	680-1	416 (500-1)	680-1¼ 416 (500-1¼)	NA
CIRCLING	760-1	496 (500-1)	780-1½ 515 (600-1½)	NA

