

(ILEXY4.ILEXY) 23166

ILEXY FOUR DEPARTURE (RNAV) AL-6111 (FAA)

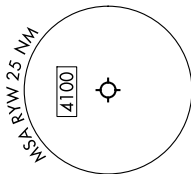
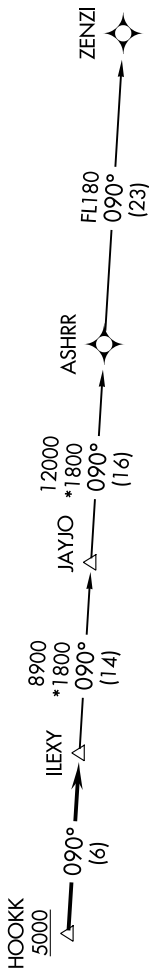
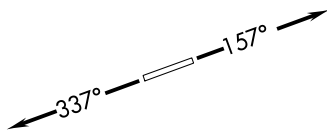
LAGO VISTA TX/RUSTY ALLEN (RYW)
LAGO VISTA, TEXAS

SC-3, 07 SEP 2023 to 05 OCT 2020

AWOS-3PT
119.375
UNICOM (CTAF)
122.725
AUSTIN DEP CON
119.0 370.85

**TOP ALTITUDE:
ASSIGNED BY ATC**

RNAV 1 - DME/DME/IRU or GPS.
RADAR required.



TAKEOFF MINIMUMS:
Rwys 15, 33: Standard.

NOTE: Houston terminal area arrivals expect routing from ILEXY.
NOTE: JAYJO transition to join V306 only.
NOTE: Aircraft not destined the Houston terminal area or joining V306 must file the ZENZI transition.

NOTE: Chart not to scale.

DEPARTURE ROUTE DESCRIPTION

TAKEOFF RUNWAY 15: Climb on heading 157° or as assigned by ATC for vectors to cross HOOKK at or above 5000, thence. . . .
TAKEOFF RUNWAY 33: Climb on heading 337° or as assigned by ATC for vectors to cross HOOKK at or above 5000, thence. . . .
 . . . on track 090° to ILEXY, then on transition. Maintain altitude assigned by ATC. Expect filed altitude 10 minutes after departure.

JAYJO TRANSITION (ILEXY4.JAYJO)
ZENZI TRANSITION (ILEXY4.ZENZI)

ILEXY FOUR DEPARTURE (RNAV) (ILEXY4.ILEXY) 15JUN23

LAGO VISTA, TEXAS
LAGO VISTA TX/RUSTY ALLEN (RYW)

SC-3, 07 SEP 2023 to 05 OCT 2023