

GAINESVILLE, TEXAS

AL-6113 (FAA)

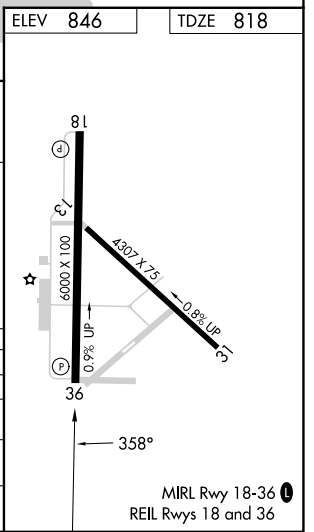
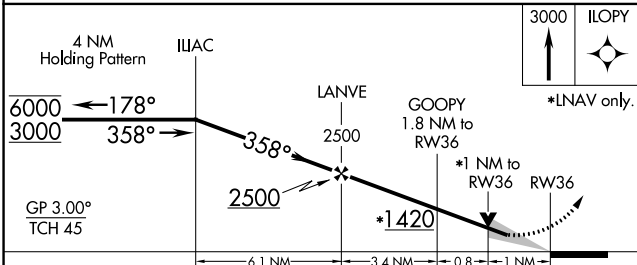
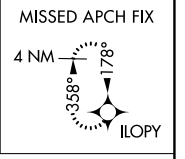
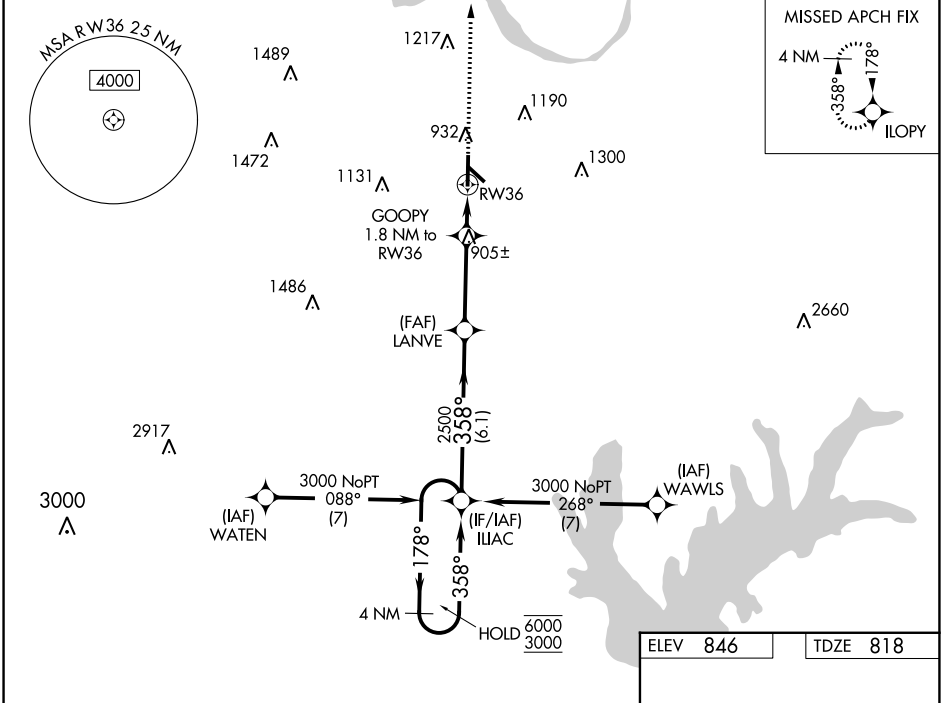
23222

WAAS CH 81841 W36A	APP CRS 358°	Rwy Idg TDZE 818 Apt Elev 846	6000
--	------------------------	---	-------------

RNAV (GPS) RWY 36

GAINESVILLE MUNI (G.L.E.)

RNP APCH.	MISSED APPROACH: Climb to 3000 direct ILOPY and hold.	
<p>▼ For uncompensated Baro-VNAV systems, LNAV/VNAV NA below -16°C or above 54°C.</p> <p>▲</p>	AWOS-3 118.375	FORT WORTH CENTER 124.75 323.0
		UNICOM 123.0 (CTAF) 0



CATEGORY	A	B	C	D
LPV DA		1068-3/4	250 (300-3/4)	
LNAV/VNAV DA		1068-3/4	250 (300-3/4)	
LNAV MDA		1160-1	342 (400-1)	
CIRCLING	1300-1 454 (500-1)	1340-1 494 (500-1)	1520-2 674 (700-2)	1600-2 1/2 754 (800-2 1/2)

GAINESVILLE, TEXAS
Amdt 1 28FEB19

33°39'N-97°12'W

GAINESVILLE MUNI (G.L.E.) RNAV (GPS) RWY 36

SC-2, 07 SEP 2023 to 05 OCT 2023

SC-2, 07 SEP 2023 to 05 OCT 2023