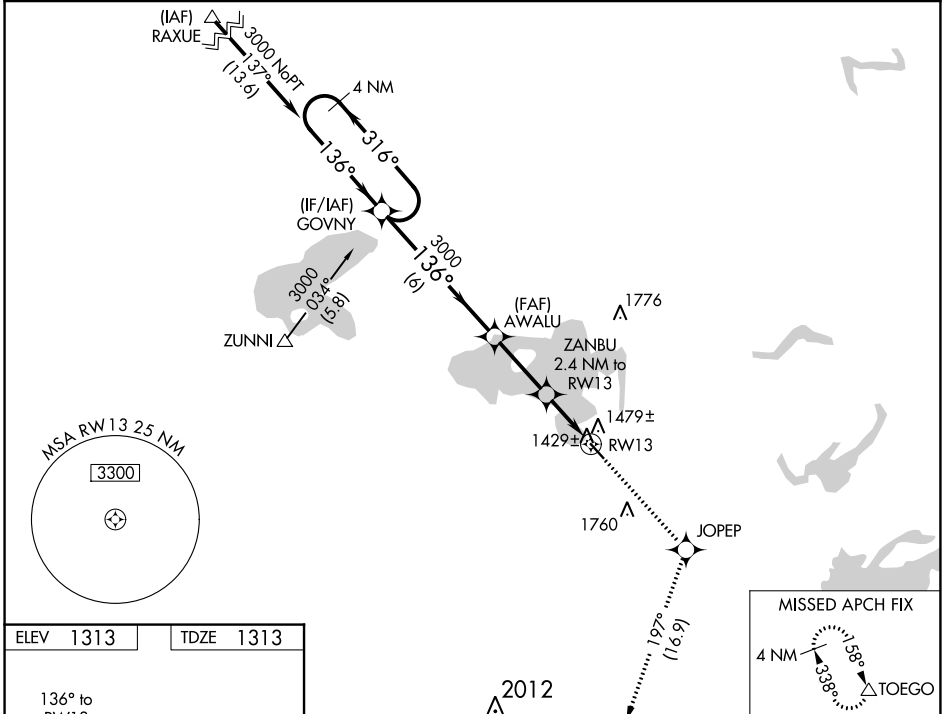


WAAS CH 69224 W13A	APP CRS 136°	Rwy Idg TDZE Apt Elev	4000 1313 1313
--	------------------------	-----------------------------	---

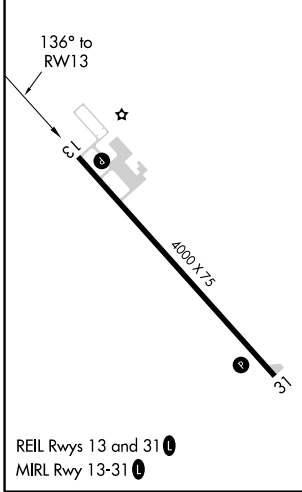
RNAV (GPS) RWY 13

ORR RGNL(ORB)

RNP APCH.		MISSED APPROACH: Climb to 3600 direct JOPEP and on track 197° to TOEGO and hold.	
<p>▼ Rwy 13 helicopter visibility reduction below ¼ SM NA. When local altimeter setting not received, use Cook altimeter setting; increase all MDA 40 feet and increase Circling visibility Cat C ¼ SM. VDP NA when using Cook altimeter setting.</p>		AWOS-3 118.325	MINNEAPOLIS CENTER 120.9 377.1
		GCO 121.725	UNICOM 122.8 (CTAF) 0



ELEV 1313	TDZE 1313
-----------	-----------



VGSI and descent angles not coincident (VGSI Angle 3.00/TCH 20).

4 NM Holding Pattern	GOVNY	AWALU	JOPEP	TOEGO
3000	316°	136°	3600	tr 197°
		ZANBU		
		3.00° TCH 40		
		2.4 NM to RWY 13		
		1.2 NM to RWY 13		
		2100		
		6 NM	2.8 NM	1.2

CATEGORY	A	B	C	D
LP MDA	1720-1	407 (500-1)	1720-1½ 407 (500-1½)	NA
LNAV MDA	1760-1	447 (500-1)	1760-1¾ 447 (500-1¾)	NA
CIRCLING	1920-1	607 (700-1)	2120-2¼ 807 (900-2¼)	NA

NC-1, 07 SEP 2023 to 05 OCT 2023

NC-1, 07 SEP 2023 to 05 OCT 2023