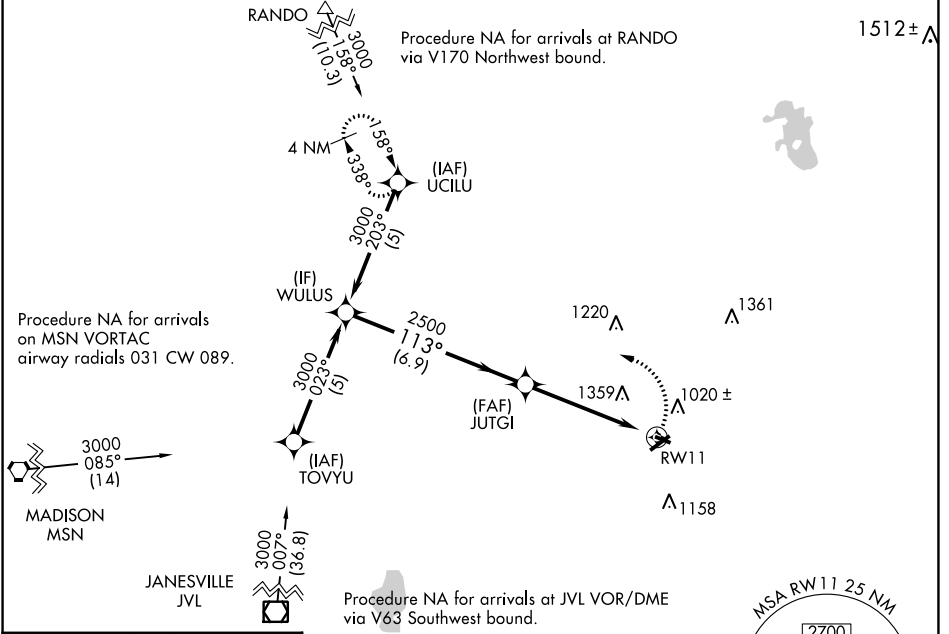


APP CRS	Rwy Idg	2801
113°	TDZE	833
	Apt Elev	833

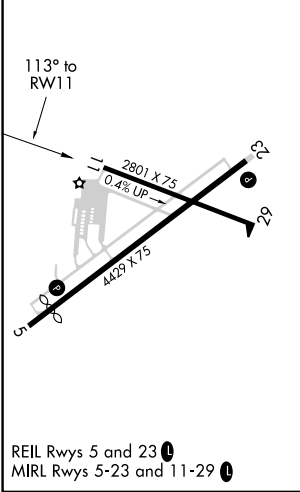
RNAV (GPS) RWY 11

WATERTOWN MUNI (RYV)

RNP APCH.		MISSED APPROACH: Climbing left turn to 3000 direct UCILU and hold.
<p>⚠ When local altimeter setting not received, use Dodge County altimeter setting and increase all MDAs 60 feet and Circling visibility Cat A ¼ SM. VDP NA when using Dodge County altimeter setting. Circling Rwy 23 NA at night.</p>		
AWOS-3 119.975	MADISON APP CON * 119.15 343.7	UNICOM 122.8 (CTAF) ①



ELEV 833 **D** TDZE 833



3000 UCILU	WULUS			
RWY 11		JUTGI	3000	
2.4 NM to RWY 11		2500	113° Procedure Turn NA	
2.4 NM		2.7 NM	6.9 NM	
CATEGORY	A	B	C	D
LNAV MDA	1640-1 807 (900-1)	1640-1¼ 807 (900-1¼)	1640-2½	807 (900-2½)
CIRCLING	1640-1 807 (900-1)	1640-1¼ 807 (900-1¼)	1720-2¾ 887 (900-2¾)	1720-3 887 (900-3)

EC-3, 07 SEP 2023 to 05 OCT 2023

EC-3, 07 SEP 2023 to 05 OCT 2023