

APP CRS	Rwy Idg	<b>4239</b>
<b>054°</b>	TDZE	<b>821</b>
	Apt Elev	<b>833</b>

# RNAV (GPS) RWY 5

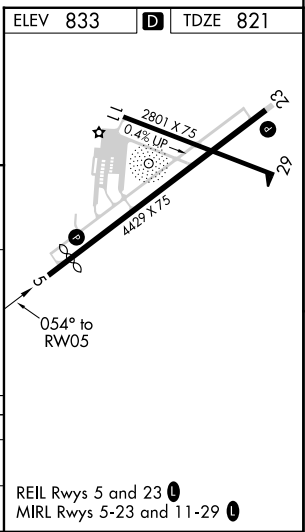
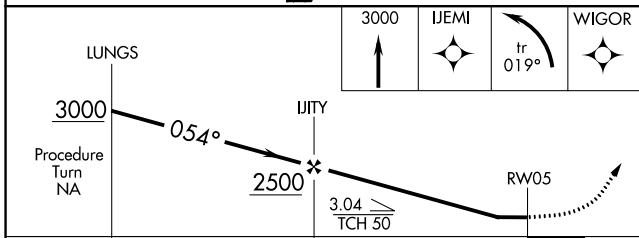
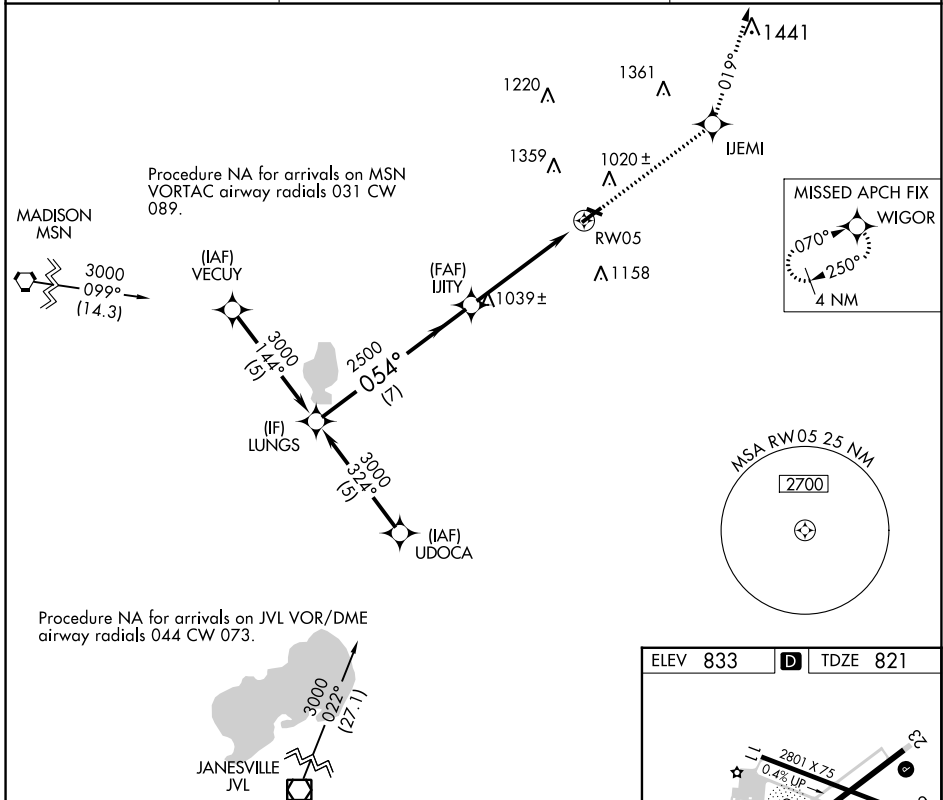
WATERTOWN MUNI (RYV)

RNP APCH.

**▼** Rwy 5 helicopter visibility reduction below 3/4 SM NA. When local altimeter setting not received, use Dodge County altimeter setting and increase all MDAs 60 feet, increase LNAV Cat C visibility 1/8 SM. Circling Rwy 23 NA at night.

**MISSED APPROACH:** Climb to 3000 direct IJEMI and left turn on 019° track to WIGOR and hold.

AWOS-3 <b>119.975</b>	MADISON APP CON * <b>119.15 343.7</b>	UNICOM <b>122.8 (CTAF)</b>
--------------------------	--	-------------------------------



CATEGORY	A	B	C	D
LNAV MDA	1440-1	619 (700-1)	1440-1 3/4 619 (700-1 3/4)	1440-2 619 (700-2)
CIRCLING	1440-1	607 (700-1)	1720-2 3/4 887 (900-2 3/4)	1720-3 887 (900-3)

EC-3, 07 SEP 2023 to 05 OCT 2023

EC-3, 07 SEP 2023 to 05 OCT 2023