

WAAS CH <b>82327</b> <b>W36A</b>	APP CRS <b>002°</b>	Rwy Idg TDZE <b>681</b> Apt Elev <b>698</b>	<b>4000</b>
--	------------------------	---	-------------

# RNAV (GPS) RWY 36

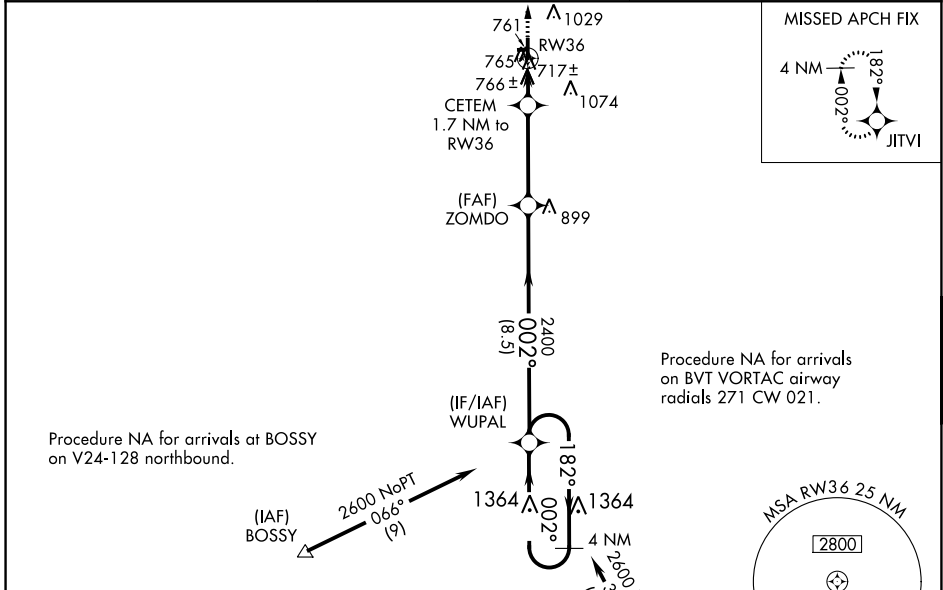
JASPER COUNTY (R.Z.L.)

RNP APCH.

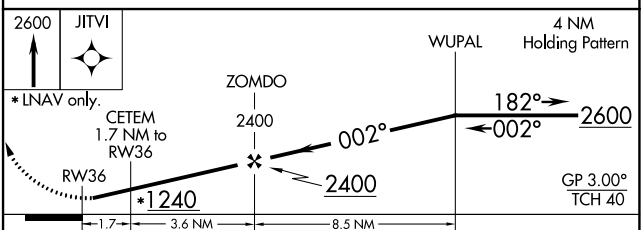
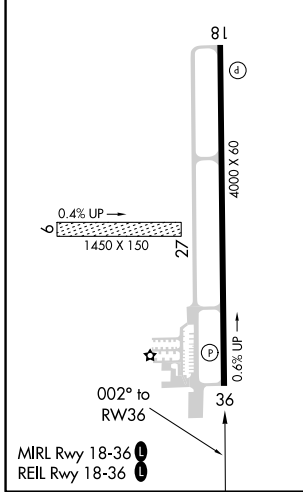
**⚠** Baro-VNAV NA when using Knox altimeter setting. For uncompensated Baro-VNAV systems, LNAV/VNAV NA below -22°C or above 54°C. When local altimeter setting not received use Knox altimeter setting and increase all DA 78 feet and all MDA 80 feet, increase LPV and LNAV/VNAV all Cals visibility 1/8 mile and LNAV and Circling Cat C visibility 1/4 mile. Rwy 36 helicopter visibility reduction below 1 SM NA. Circling NA to Rwys 9 and 27.

MISSED APPROACH:  
Climb to 2600 direct  
JITVI and hold.

AWOS-3P <b>119.175</b>	CHICAGO CENTER <b>132.5 284.7</b>	UNICOM <b>122.8 (CTAF) 0</b>
---------------------------	--------------------------------------	---------------------------------



ELEV 698	TDZE 681
----------	----------



CATEGORY	A	B	C	D
LPV DA		931-1 250 (300-1)		NA
LNAV/ VNAV DA		947-1 266 (300-1)		NA
LNAV MDA		1020-1 339 (400-1)		NA
CIRCLING	1120-1 422 (500-1)	1380-1 682 (700-1)	1440-2 1/4 742 (800-2 1/4)	NA

EC-2, 07 SEP 2023 to 05 OCT 2023

EC-2, 07 SEP 2023 to 05 OCT 2023