

WAAS CH 62812 W17A	APP CRS 170°	Rwy Idg 4400 TDZE 769 Apt Elev 769
--	------------------------	---

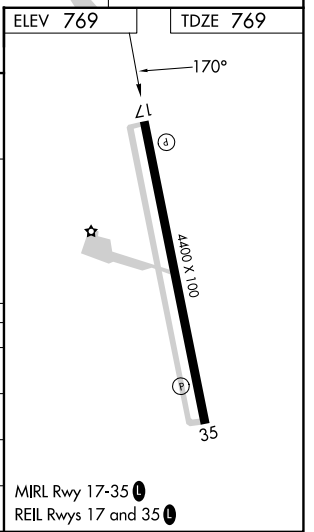
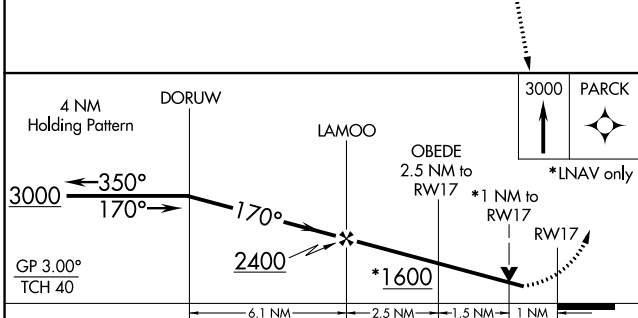
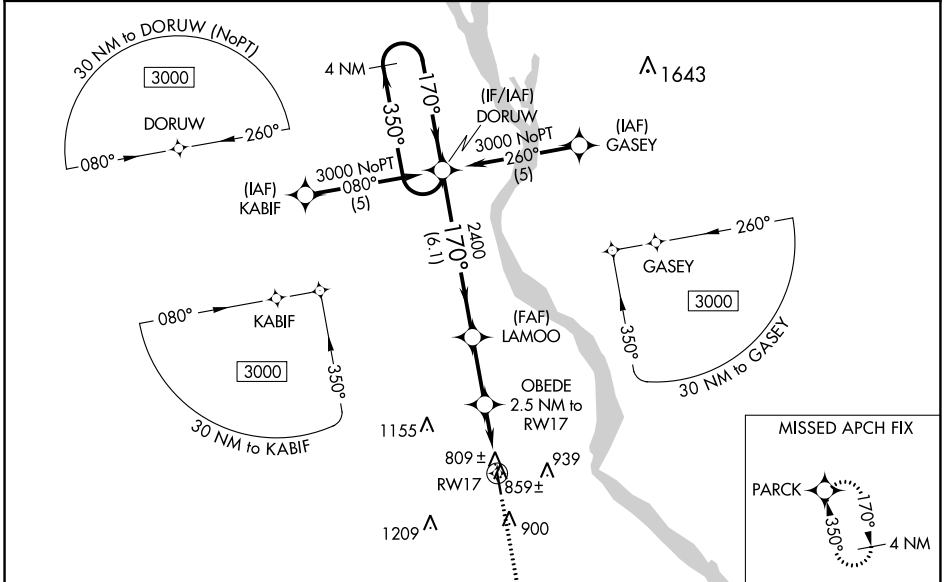
RNAV (GPS) RWY 17

HANNIBAL RGNL (H.A.E.)

▽ For uncompensated Baro-VNAV systems, LNAV/VNAV NA below -16°C (4°F) or above 54°C (130°F). DME/DME RNP-0.3 NA. Visibility reduction by helicopters NA. When local altimeter setting not received, use Quincy altimeter setting; increase all DA 41 feet, all MDA 60 feet, increase LNAV Cat C visibility ¼ SM and Circling Cat C visibility ¼ SM. Baro-VNAV and VDP NA when using Quincy altimeter setting.

▲ NA MISSED APPROACH: Climb to 3000 direct PARCK and hold.

AWOS-3PT 120.775	KANSAS CITY CENTER 126.225 317.775	UNICOM 122.8(CTAF) 0
----------------------------	--	--------------------------------



CATEGORY	A	B	C	D
LPV DA	1019-1	250 (300-1)		NA
LNAV/VNAV DA	1079-1¼	310 (400-1¼)		NA
LNAV MDA	1120-1	351 (400-1)		NA
CIRCLING	1260-1	491 (500-1)	1640-2½ 871 (900-2½)	NA

NC-3, 07 SEP 2023 to 05 OCT 2023

NC-3, 07 SEP 2023 to 05 OCT 2023