

WAAS CH <b>69212</b> <b>W25A</b>	APP CRS <b>252°</b>	Rwy Idg TDZE Apt Elev	<b>4703</b> <b>913</b> <b>913</b>
--	------------------------	-----------------------------	---

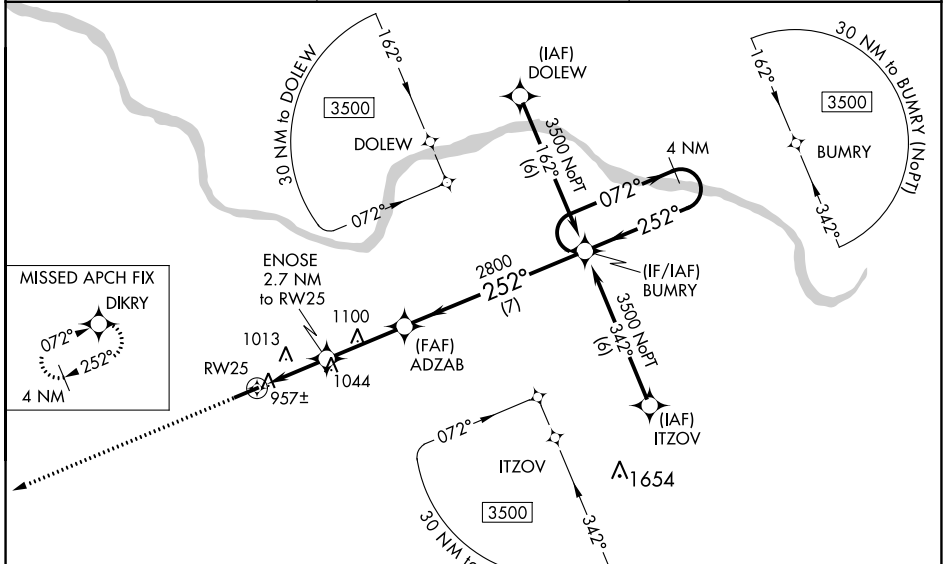
# RNAV (GPS) RWY 25

FLEMING-MASON (F'GX)

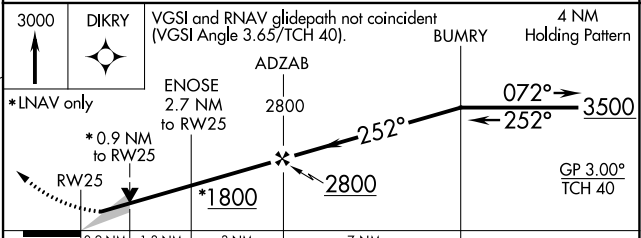
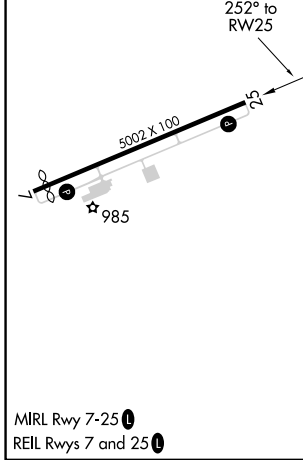
**⚠** Baro-VNAV NA when using Lexington altimeter setting. For uncompensated Baro-VNAV systems, LNAV/VNAV NA below -16°C (4°F) or above 47°C (116°F). DME/DME RNP-0.3 NA. When local altimeter setting not received, use Lexington altimeter setting and increase LPV DA to 1290 feet, and all visibilities ¼ SM, LNAV/VNAV DA to 1344 feet and all visibilities ½ SM; increase all MDAs 140 feet and LNAV Cat C visibility ½ SM, Cat D ¼ SM and increase Circling Cat C and D visibility ½ SM.

**MISSED APPROACH:**  
Climb to 3000 direct  
DIKRY and hold.

AWOS-3 <b>118.125</b>	INDIANAPOLIS CENTER <b>124.225 360.725</b>	UNICOM <b>123.0(CTAF) 0</b>
--------------------------	---	--------------------------------



ELEV 913	<b>D</b>	TDZE 913
----------	----------	----------



CATEGORY	A	B	C	D
LPV DA	1163-1		250 (300-1)	
LNAV/VNAV DA	1217-1		304 (400-1)	
LNAV MDA	1280-1		367 (400-1)	
CIRCLING	1360-1	1380-1	1520-1 ¼	1280-1 ¼
	447 (500-1)	467 (500-1)	607 (700-1 ¼)	367 (400-1 ¼)

SE-1, 07 SEP 2023 to 05 OCT 2023

SE-1, 07 SEP 2023 to 05 OCT 2023