

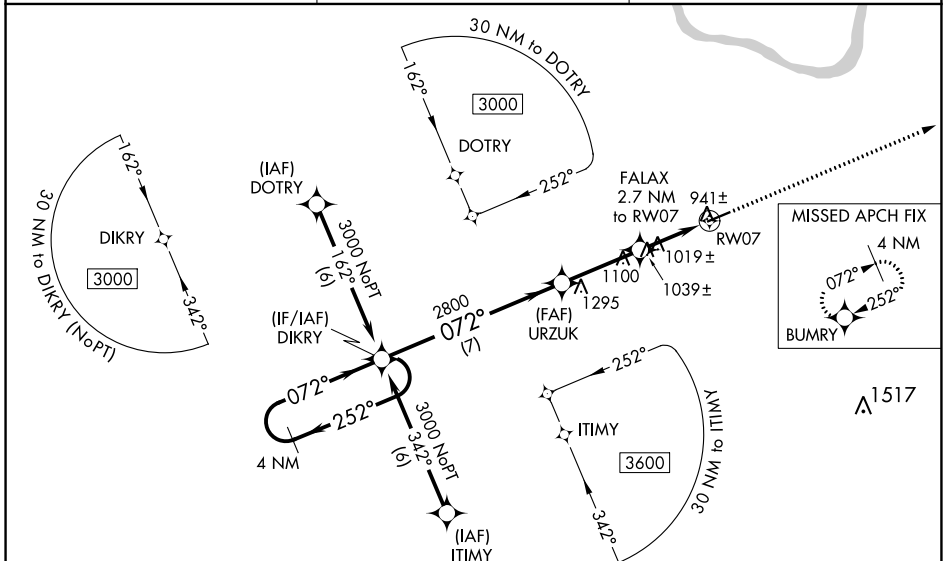
WAAS CH 56312 W07A	APP CRS 072°	Rwy Idg TDZE Apt Elev	4703 913 913
--	------------------------	-----------------------------	---

RNAV (GPS) RWY 7

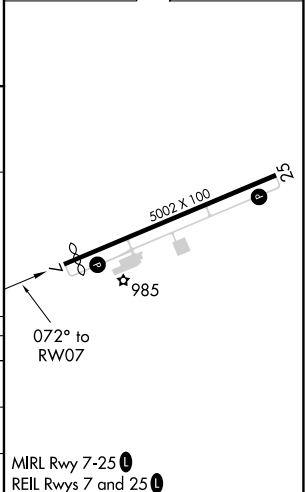
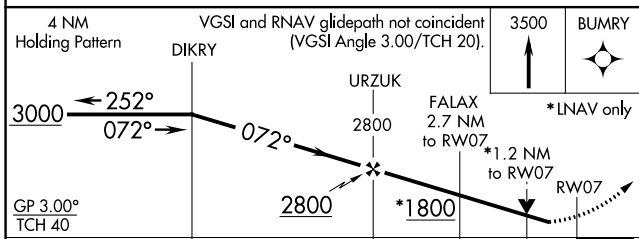
FLEMING-MASON (F'GX)

RNP APCH.	<p>Baro-VNAV NA when using Lexington altimeter setting. For uncompensated Baro-VNAV systems, LNAV/VNAV NA below -16°C or above 47°C. Rwy 7 helicopter visibility reduction below ¼ SM NA. When local altimeter setting not received, use Lexington altimeter setting: increase LPV DA to 1290 and all visibilities ¼ SM; increase LNAV/VNAV DA to 1383 feet and all visibilities ½ SM; increase all MDA 140 feet and LNAV Cat C visibility ½ SM and Cat D ½ SM.</p>	MISSED APPROACH: Climb to 3500 direct BUMRY and hold.
-----------	---	---

AWOS-3 118.125	INDIANAPOLIS CENTER 124.225 360.725	UNICOM 123.0(CTAF)
--------------------------	---	------------------------------



ELEV 913	D TDZE 913
----------	-------------------



CATEGORY	A	B	C	D
LPV DA	1163-1		250 (300-1)	
LNAV/VNAV DA	1256-1¼		343 (400-1¼)	
LNAV MDA	1320-1 407 (500-1)		1320-1¼ 407 (500-1¼)	

MIRL Rwy 7-25
REIL Rws 7 and 25

SE-1, 07 SEP 2023 to 05 OCT 2023

SE-1, 07 SEP 2023 to 05 OCT 2023