

VOR OZB <b>109.0</b>	APP CRS <b>287°</b>	Rwy Idg TDZE Apt Elev <b>N/A</b> <b>N/A</b> <b>2559</b>
-------------------------	------------------------	--

# VOR-A

GOTHENBURG MUNI (GTE)

**NA** Circling NA to Rwys 14 and 32. Procedure NA at night. Use Lexington altimeter setting; when not received, use North Platte altimeter setting and increase all MDA 40 feet.

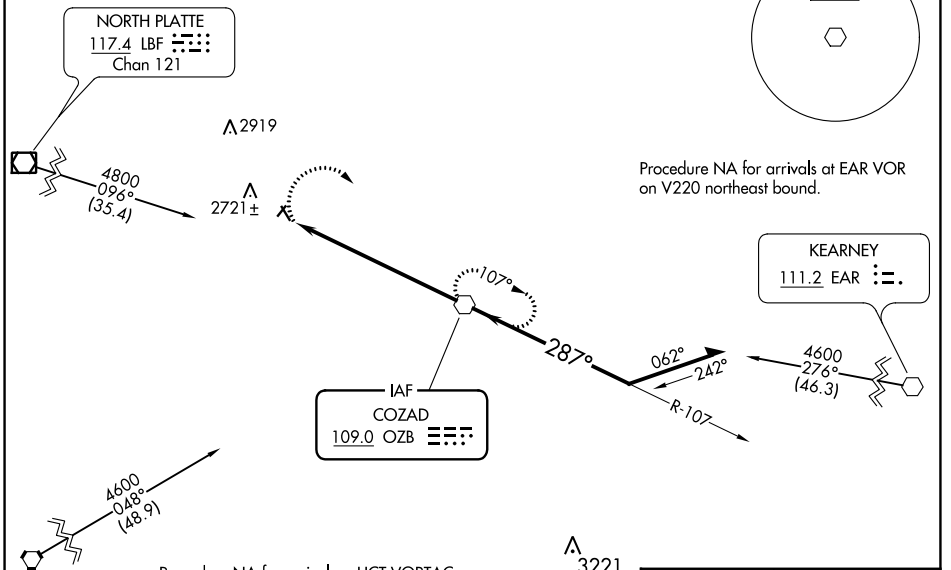
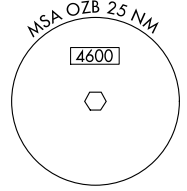
**MISSED APPROACH:** Climbing right turn to 4300 direct OZB VOR and hold.

LXN AWOS-3  
**121.025**

DENVER CENTER  
**132.7 226.675**

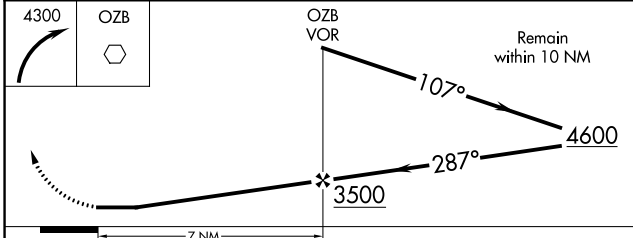
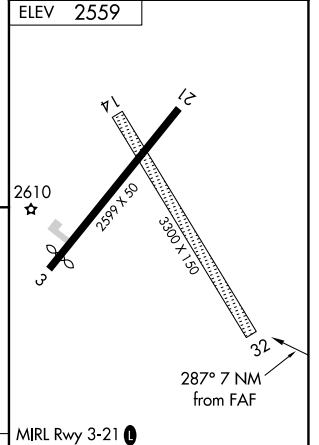
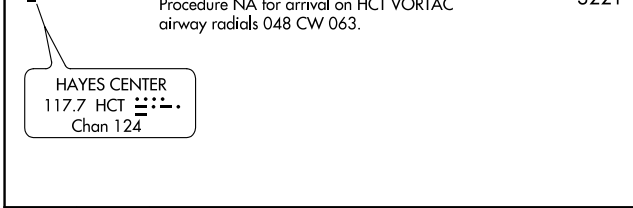
UNICOM  
**122.8 (CTAF)**

Procedure NA for arrival on LBF VOR/DME airway radials 062 CW 080.



NC-2, 07 SEP 2023 to 05 OCT 2023

NC-2, 07 SEP 2023 to 05 OCT 2023



CATEGORY	A	B	C	D
<b>CIRCLING</b>	3120-1 561 (600-1)	3180-1 621 (700-1)	NA	

FAF to MAP 7 NM					
Knots	60	90	120	150	180
Min:Sec	7:00	4:40	3:30	2:48	2:20

# VOR-A