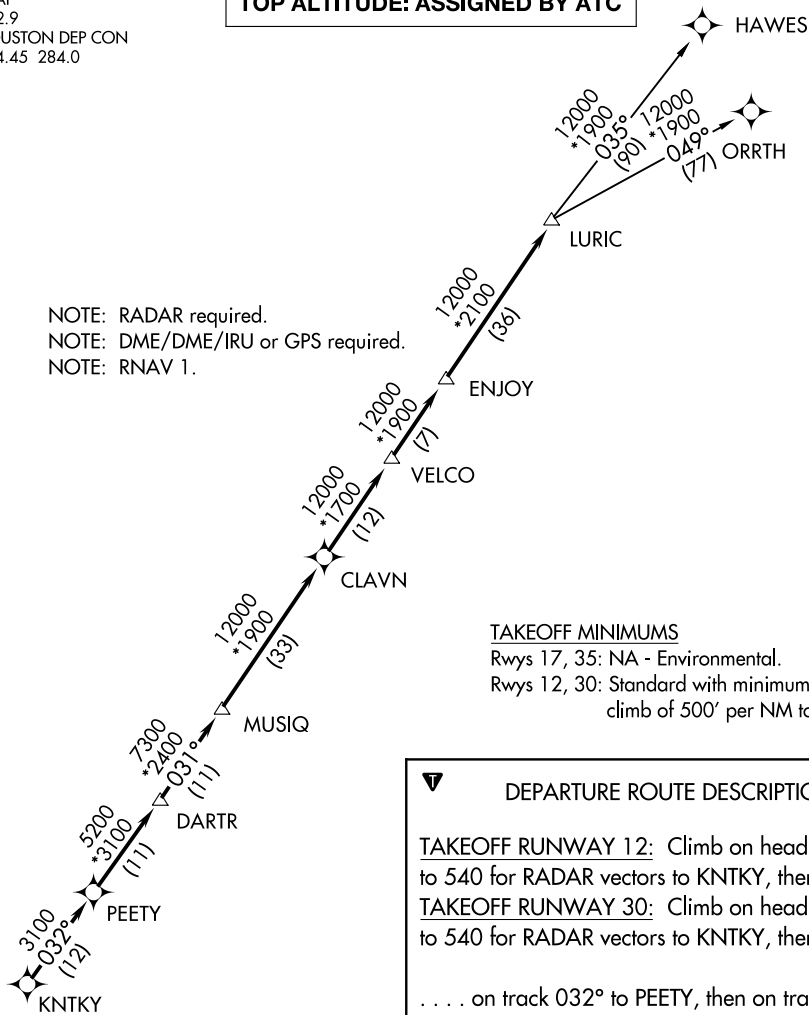


# LURIC EIGHT DEPARTURE (RNAV)

CTAF  
122.9  
HOUSTON DEP CON  
134.45 284.0

**TOP ALTITUDE: ASSIGNED BY ATC**

NOTE: RADAR required.  
NOTE: DME/DME/IRU or GPS required.  
NOTE: RNAV 1.



### TAKEOFF MINIMUMS

Rwys 17, 35: NA - Environmental.  
Rwys 12, 30: Standard with minimum  
climb of 500' per NM to 540.



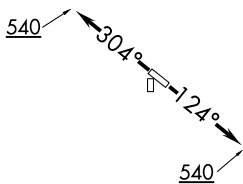
### DEPARTURE ROUTE DESCRIPTION

TAKEOFF RUNWAY 12: Climb on heading 124° to 540 for RADAR vectors to KNTKY, thence . . .

TAKEOFF RUNWAY 30: Climb on heading 304° to 540 for RADAR vectors to KNTKY, thence . . .

. . . on track 032° to PEETY, then on track 032° to DARTR, then on track 031° to MUSIQ, then on track 031° to CLAVN, then on track 031° to VELCO, then on track 031° to ENJOY, then on track 031° to LURIC, then on (transition). Maintain ATC assigned altitude. Expect filed altitude 10 minutes after departure.

HAWES TRANSITION (LURIC8.HAWES)  
ORRTH TRANSITION (LURIC8.ORRTH)



NOTE: Chart not to scale.