

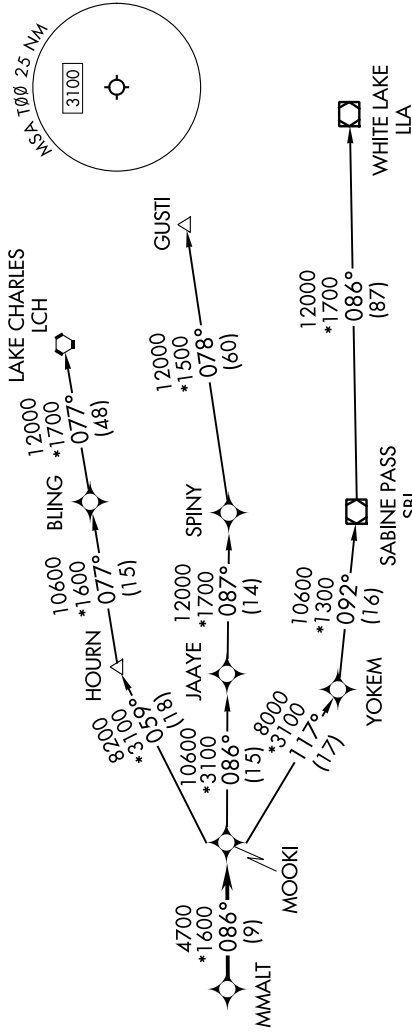
MMALT SIX DEPARTURE (RNAV)

SC-5, 07 SEP 2023 to 05 OCT 2020

HOUSTON DEP CON
134.45 284.0
CTAF
122.9

RNAV 1 - DME/DME/IRU or GPS.
RADAR required.

TOP ALTITUDE:
ASSIGNED BY ATC



NOTE: GUSTI and LCH Transitions ATC assigned only for aircraft departing AXH, EFD, GLS, HPY, IWS, LBX, LVJ, SGR, TIME, T00, T41 and 54T.

DEPARTURE ROUTE DESCRIPTION

TAKEOFF RUNWAY 12: Climb on heading 124° to 540, for RADAR vectors to MMALT, thence . . .
TAKEOFF RUNWAY 30: Climb on heading 304° to 540, for RADAR vectors to MMALT, thence . . .

. . . on track 086° to MOOKI, then on (transition). Maintain ATC assigned altitude.
Expect filed altitude 10 minutes after departure.

- GUSTI TRANSITION (MMALT6.GUSTI)
- LAKE CHARLES TRANSITION (MMALT6.LCH)
- WHITE LAKE TRANSITION (MMALT6.LLA)

TAKEOFF MINIMUMS
Rwys 17, 35: NA-Environmental.
Rwys 12, 30: Standard with minimum climb of 500'/NM to 540.

NOTE: Chart not to scale.

SC-5, 07 SEP 2023 to 05 OCT 2023