

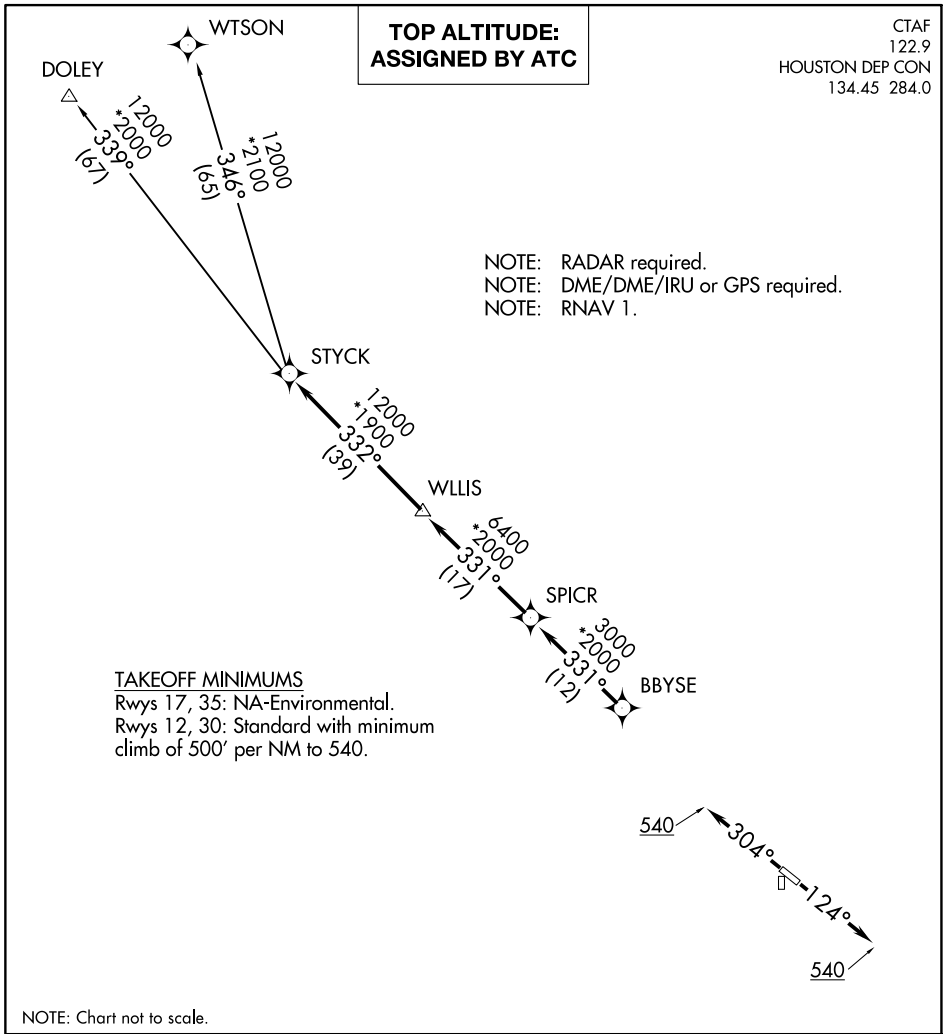
(STYCK8.STYCK) 21280

AL-6395 (FAA)

CHAMBERS COUNTY (T00)

STYCK EIGHT DEPARTURE (RNAV)

ANAHUAC, TEXAS



SC-5, 07 SEP 2023 to 05 OCT 2023

SC-5, 07 SEP 2023 to 05 OCT 2023

DEPARTURE ROUTE DESCRIPTION

TAKEOFF RUNWAY 12: Climb on heading 124° to 540 for RADAR vectors to BBYSE, thence. . .

TAKEOFF RUNWAY 30: Climb on heading 304° to 540 for RADAR vectors to BBYSE, thence. . .

. . . on track 331° to SPICR, then on track 331° to WLLIS, then on track 332° to STYCK, then on (transition). Maintain ATC assigned altitude. Expect filed altitude 10 minutes after departure.

DOLEY TRANSITION (STYCK8.DOLEY)
WTSON TRANSITION (STYCK8.WTSON)

STYCK EIGHT DEPARTURE (RNAV)

(STYCK8.STYCK) 07OCT21

ANAHUAC, TEXAS

CHAMBERS COUNTY (T00)