

# WYLSN EIGHT DEPARTURE (RNAV)

CTAF  
122.9  
HOUSTON DEP CON  
134.45 284.0

**TOP ALTITUDE:  
ASSIGNED BY ATC**

NOTE: RADAR required.  
NOTE: DME/DME/IRU or GPS required.  
NOTE: RNAV 1.

### TAKEOFF MINIMUMS

Rwy 17, 35: NA - Environmental.  
Rwy 12, 30: Standard with minimum  
climb of 500' per NM to 540.

### DEPARTURE ROUTE DESCRIPTION

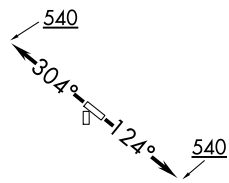
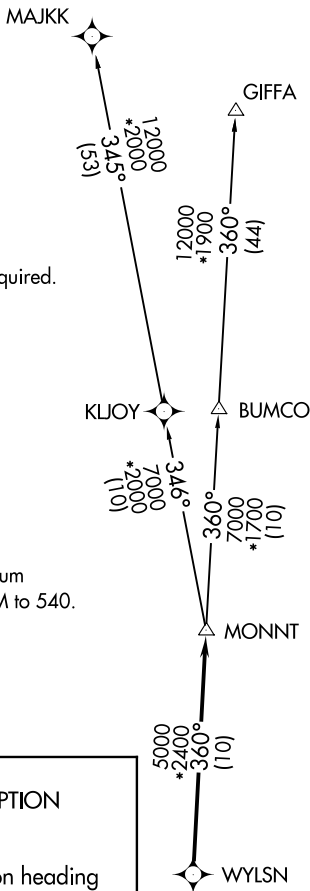
TAKEOFF RUNWAY 12: Climb on heading  
124° to 540 for RADAR vectors to WYLSN,  
thence. . . .

TAKEOFF RUNWAY 30: Climb on heading  
304° to 540 for RADAR vectors to WYLSN,  
thence. . . .

. . . .on track 360° to MONNT, then on  
(transition). Maintain ATC assigned altitude.  
Expect filed altitude 10 minutes after departure.

GIFFA TRANSITION (WYLSN8.GIFFA)

MAJKK TRANSITION (WYLSN8.MAJKK)



NOTE: Chart not to scale.

# WYLSN EIGHT DEPARTURE (RNAV)

SC-5, 07 SEP 2023 to 05 OCT 2023

SC-5, 07 SEP 2023 to 05 OCT 2023