

APP CRS	Rwy Idg	3302
024°	TDZE	1185
	Apt Elev	1188

RNAV (GPS) RWY 2

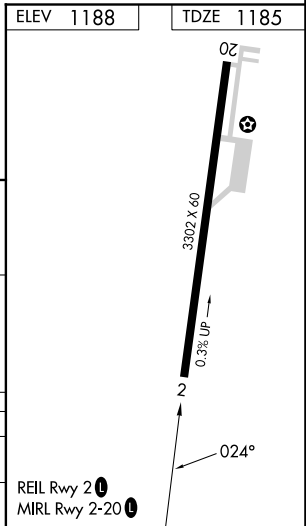
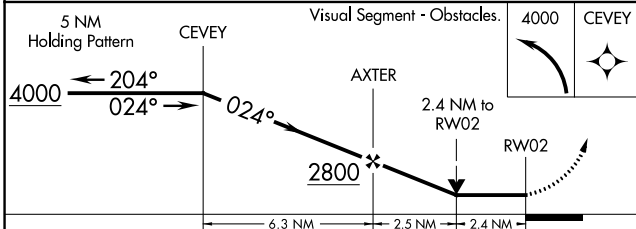
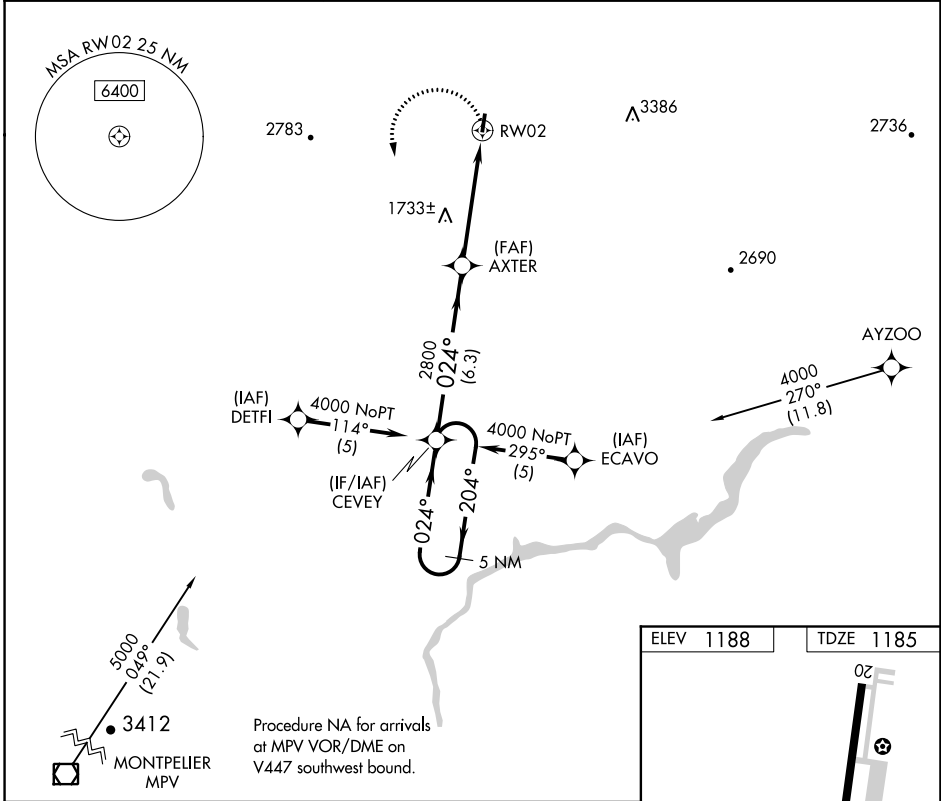
CALEDONIA COUNTY (CDA)

RNP APCH - GPS.

▼ When local altimeter setting not received, use Whitefield altimeter setting:
 ▲ increase all MDA 80 feet and visibility LNAV Cat A and Circling Cat A ¼ SM.
 ▲ Circling Rwy 20 NA at night.

MISSED APPROACH: Climbing left turn to 4000 direct CEVEY and hold.

AWOS-3 119.275	BOSTON CENTER 135.7 282.2	UNICOM 122.8 (CTAF) 0
--------------------------	-------------------------------------	---------------------------------



CATEGORY	A	B	C	D
LNAV MDA	2000-1 815 (900-1)	2000-1 ¼ 815 (900-1 ¼)		NA
CIRCLING	2000-1 812 (900-1)	2000-1 ¼ 812 (900-1 ¼)		NA

NE-1, 07 SEP 2023 to 05 OCT 2023

NE-1, 07 SEP 2023 to 05 OCT 2023