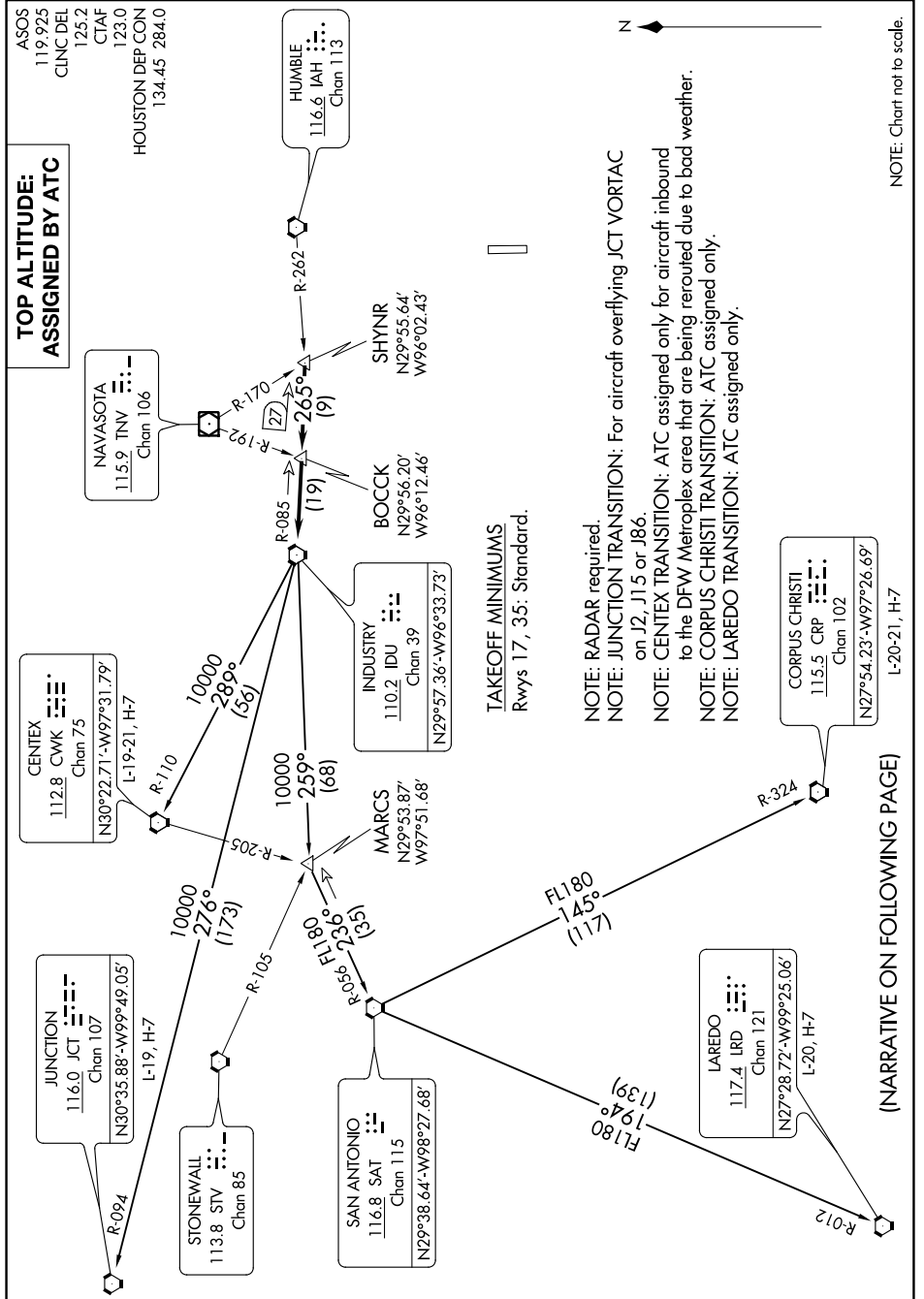


# INDUSTRY ONE DEPARTURE

AL-6453 (FAA)

TEXAS GULF COAST RGNL (L.B.X)  
ANGLETON/LAKE JACKSON, TEXAS

SC-5, 07 SEP 2023 to 05 OCT 2023



**TOP ALTITUDE:  
ASSIGNED BY ATC**

ASOS  
119.925  
CLNC DEL  
125.2  
CTAF  
123.0  
HOUSTON DEP CON  
134.45 284.0

NAVASOTA  
115.9 TNV  
Chan 106

CENTEX  
112.8 CWK  
Chan 75  
N30°22.71'-W97°31.79'  
L-19, 21, H-7

JUNCTION  
116.0 JCT  
Chan 107  
N30°35.88'-W99°49.05'  
L-19, H-7

STONEWALL  
113.8 STW  
Chan 85

SAN ANTONIO  
116.8 SAT  
Chan 115  
N29°38.64'-W98°27.68'

MARCUS  
N29°53.87'  
W97°51.68'

INDUSTRY  
110.2 IDU  
Chan 39  
N29°57.36'-W96°33.73'

BOCCK  
N29°56.20'  
W96°12.46'

SHYNR  
N29°55.64'  
W96°02.43'

HUMBLE  
116.6 IAH  
Chan 113

**TAKEOFF MINIMUMS**  
Rwys 17, 35: Standard.

NOTE: RADAR required.  
NOTE: JUNCTION TRANSITION: For aircraft overflying JCT VORTAC on J2, J15 or J86.  
NOTE: CENTEX TRANSITION: ATC assigned only for aircraft inbound to the DFW Metroplex area that are being rerouted due to bad weather.  
NOTE: CORPUS CHRISTI TRANSITION: ATC assigned only.  
NOTE: LAREDO TRANSITION: ATC assigned only.

CORPUS CHRISTI  
115.5 CRP  
Chan 102  
N27°54.23'-W97°26.69'  
L-20, 21, H-7

LAREDO  
117.4 IRD  
Chan 121  
N27°28.72'-W99°25.06'  
L-20, H-7

(NARRATIVE ON FOLLOWING PAGE)

NOTE: Chart not to scale.

# INDUSTRY ONE DEPARTURE

ANGLETON/LAKE JACKSON, TEXAS  
TEXAS GULF COAST RGNL (L.B.X)

SC-5, 07 SEP 2023 to 05 OCT 2023