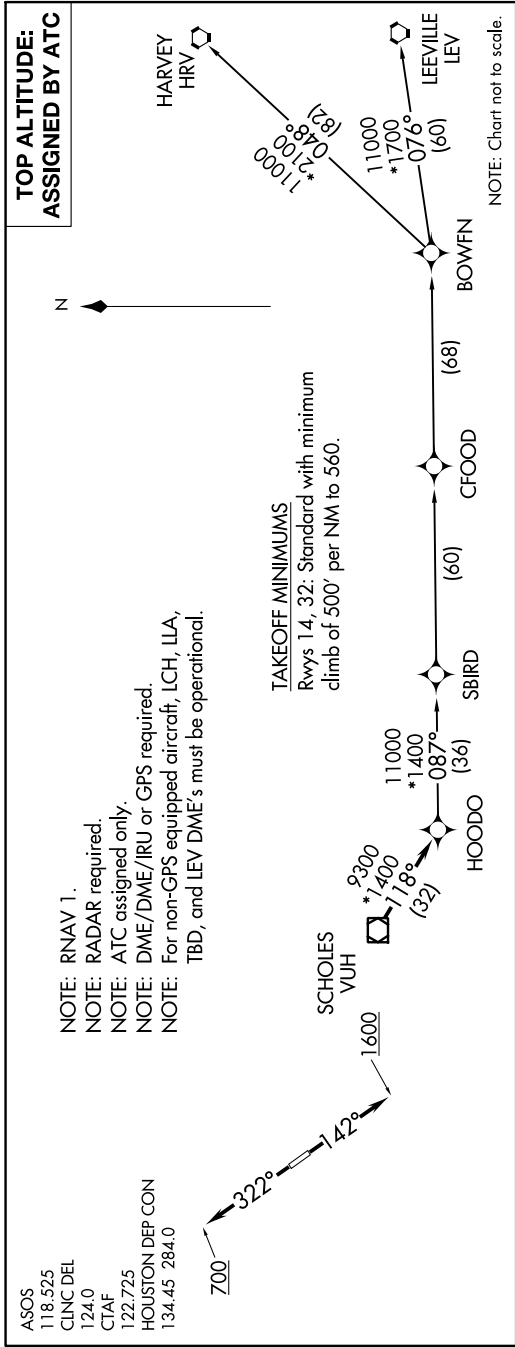


SC-5, 07 SEP 2023 to 05 OCT 2023



DEPARTURE ROUTE DESCRIPTION

TAKEOFF RUNWAY 14: Climb on heading 142° to 1600, for RADAR vectors to VUH VOR/DME, thence
TAKEOFF RUNWAY 32: Climb on heading 322° to 700, for RADAR vectors to VUH VOR/DME, thence

. . . . on track 118° to HOODO, then on (transition). Maintain ATC assigned altitude.
 Expect filed altitude 10 minutes after departure.

- BOWFN TRANSITION (HOODO7.BOWFN)**
- CFOOD TRANSITION (HOODO7.CFOOD)**
- HARVEY TRANSITION (HOODO7.HRV)**
- LEEVILLE TRANSITION (HOODO7.LEV)**
- SBIRD TRANSITION (HOODO7.SBIRD)**

SC-5, 07 SEP 2023 to 05 OCT 2023