

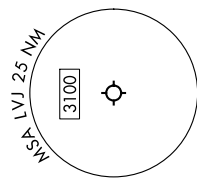
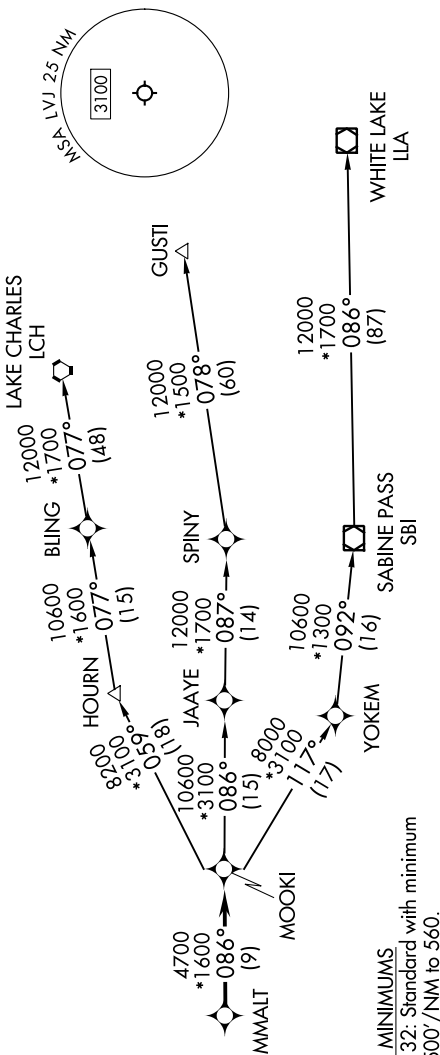
# MMALT SIX DEPARTURE (RNAV)

SC-5, 07 SEP 2023 to 05 OCT 2020

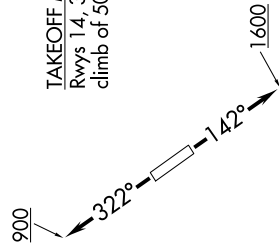
RNAV 1 - DME/DME/IRU or GPS.  
RADAR required.

HOUSTON DEP CON  
134.45 284.0  
ASOS  
118.525  
CLNC DEL  
124.0  
CTAF  
122.725

**TOP ALTITUDE:  
ASSIGNED BY ATC**



**TAKEOFF MINIMUMS**  
Rwys 14, 32: Standard with minimum climb of 500'/NM to 560.



**NOTE:** GUSTI and LCH Transitions ATC assigned only for aircraft departing AXH, EFD, GLS, HPY, IWS, LBX, LVJ, SGR, TME, T00, T41 and 54T.

## DEPARTURE ROUTE DESCRIPTION

**TAKEOFF RUNWAY 14:** Climb on heading 142° to 1600, for RADAR vectors to MMALT, thence. . . .  
**TAKEOFF RUNWAY 32:** Climb on heading 322° to 900, for RADAR vectors to MMALT, thence. . . .  
 . . . on track 086° to MOOKI, then on (transition). Maintain ATC assigned altitude.  
 Expect filed altitude 10 minutes after departure.

- GUSTI TRANSITION (MMALT6.GUSTI)
- LAKE CHARLES TRANSITION (MMALT6.LCH)
- WHITE LAKE TRANSITION (MMALT6.LLA)

NOTE: Chart not to scale.