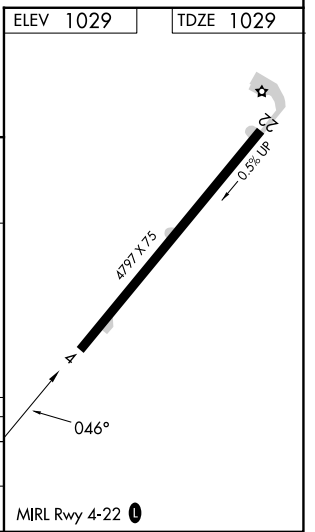
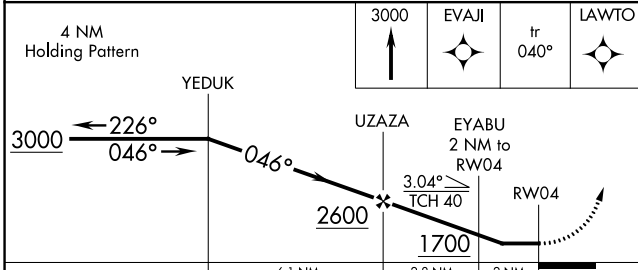
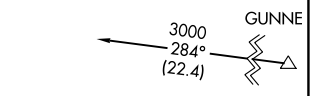
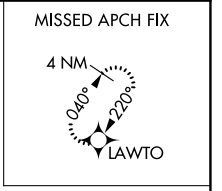
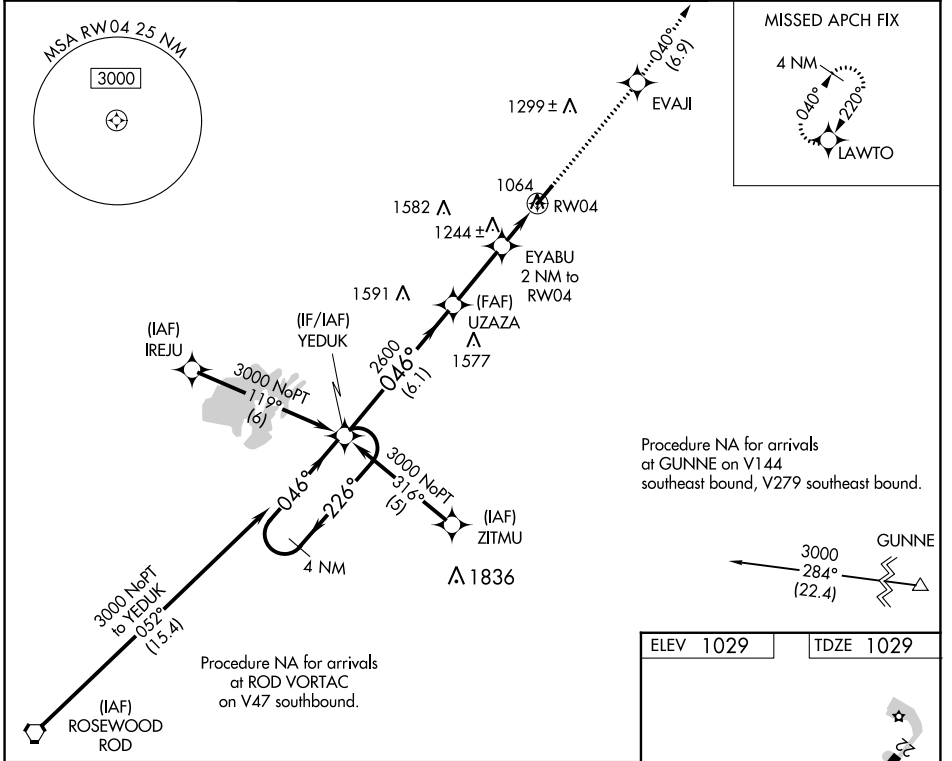


APP CRS	Rwy Idg	<b>4797</b>
<b>046°</b>	TDZE	<b>1029</b>
	Apt Elev	<b>1029</b>

# RNAV (GPS) RWY 4

HARDIN COUNTY (I95)

RNP APCH - GPS.			UNICOM <b>122.8 (CTAF) 0 *</b>
<p><b>NA</b> Rwy 4 helicopter visibility reduction below 1 SM NA. Procedure NA at night. Circling NA for Cat D NW of Rwy 4-22. When local altimeter setting not received, use Lima altimeter setting and increase all MDAs 60 feet and LNAV visibility Cat C ¼ SM, and Circling visibility Cat C ¼ SM.</p>			MISSED APPROACH: Climb to 3000 direct EVAJI and on track 040° to LAWTO and hold.
AWOS-3 <b>126.4</b>	AOH ASOS <b>128.725</b>	COLUMBUS APP CON <b>118.425 323.15</b>	



CATEGORY	A	B	C	D
LNAV MDA	1560-1	531 (600-1)	1560-1½ 531 (600-1½)	1560-1¾ 531 (600-1¾)
CIRCLING	1580-1 551 (600-1)	1620-1 591 (600-1)	1620-1½ 591 (600-1½)	1620-2 591 (600-1)

EC-2, 07 SEP 2023 to 05 OCT 2023

EC-2, 07 SEP 2023 to 05 OCT 2023