


WAAS CH 78222 W05A	APP CRS 048°	Rwy Idg TDZE Apt Elev	5500 18 19
--	------------------------	-----------------------------	---------------------------------------

RNAV (GPS) RWY 5

CHESAPEAKE RGNL (CPK)

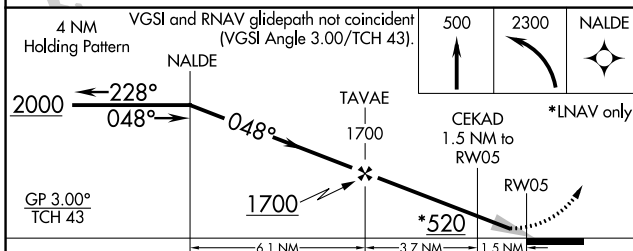
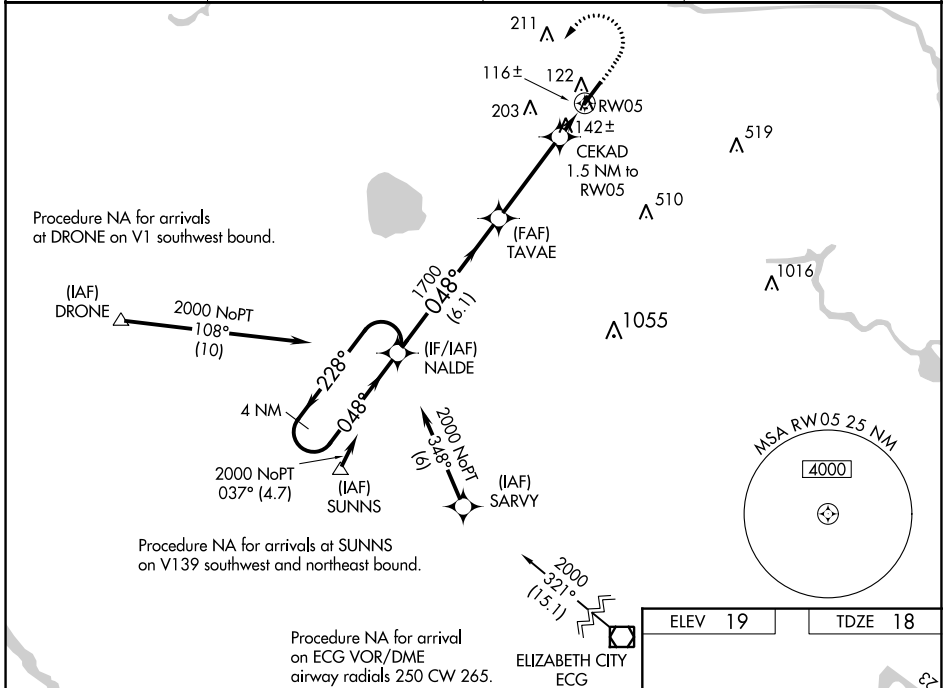
RNP APCH.

⚠ When local altimeter setting not received, use Norfolk Intl altimeter setting and increase all DA 36 feet and all MDA 40 feet; increase LNAV Cats C and D visibility $\frac{1}{8}$ mile. Baro-VNAV NA when using Norfolk Intl altimeter setting. For uncompensated Baro-VNAV systems, LNAV/VNAV NA below -1.5°C (5°F) or above 43°C (109°F). For inoperative MALSR, increase LNAV/VNAV all Cats visibility to $\frac{1}{8}$ mile.

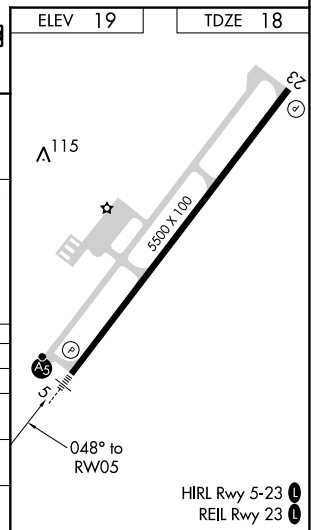
MALSR 

MISSED APPROACH: Climb to 500 then climbing left turn to 2300 direct NALDE and hold.

AWOS-3 123.675	NORFOLK APP CON 118.9 353.7	GCO 135.075	UNICOM 123.075 (CTAF) 0
--------------------------	---------------------------------------	-----------------------	-----------------------------------



CATEGORY	A	B	C	D
LPV DA		218- $\frac{1}{2}$	200 (200- $\frac{1}{2}$)	
LNAV/VNAV DA		278- $\frac{1}{2}$	260 (300- $\frac{1}{2}$)	
LNAV MDA	400- $\frac{1}{2}$	382 (400- $\frac{1}{2}$)	400- $\frac{5}{8}$	382 (400- $\frac{5}{8}$)
CIRCLING	460-1 441 (500-1)	480-1 461 (500-1)	520-1 $\frac{1}{2}$ 501 (600-1 $\frac{1}{2}$)	580-2 561 (600-2)



NE-3, 07 SEP 2023 to 05 OCT 2023

NE-3, 07 SEP 2023 to 05 OCT 2023