

(DAWNN1.DAWNN) 21336
DAWNN ONE DEPARTURE

AL-6614 (FAA)

INDY SOUTH GREENWOOD (HFY)
 INDIANAPOLIS, INDIANA

AWOS-3P
 118.525
 INDIANAPOLIS DEP CON
 124.95 317.8

**TOP ALTITUDE:
 ASSIGNED BY ATC**

BRICKYARD
 116.3 VHP
 Chan 110

TERRE HAUTE
 115.3 TTH
 Chan 100

HOOSIER
 110.2 OOM
 Chan 39

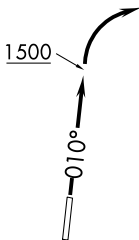
SNEVA
 RADAR
 N39°21.43'
 W86°18.96'

FOYTT
 RADAR
 N39°02.50'
 W86°16.85'

DAWNN
 N38°34.10'
 W86°13.72'
 10000
 (For LOUISVILLE Transition)

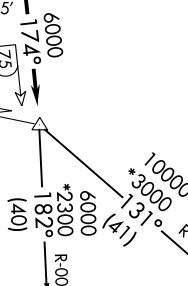
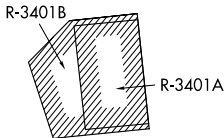
MYSTIC
 108.2 MYS
 N37°53.64'-W86°14.67'

LOUISVILLE
 114.8 IU
 Chan 95
 N38°06.21'-W85°34.65'
 L-26-27, H-5-10



TAKEOFF MINIMUMS:

Rwy 1: Standard.
 Rwy 19: 300-1 or standard with minimum
 climb of 484' per NM to 1200.



- NOTE: RADAR required.
- NOTE: Select appropriate localizer/DME frequency/channel prior to departure.
- NOTE: Turbojets accelerate to 250K until reaching 10000, if unable advise ATC.
- NOTE: Assigned to aircraft with a requested altitude of 11000 or above.

(NARRATIVE ON FOLLOWING PAGE)

NOTE: Chart not to scale.

EC-2, 07 SEP 2023 to 05 OCT 2023

EC-2, 07 SEP 2023 to 05 OCT 2023