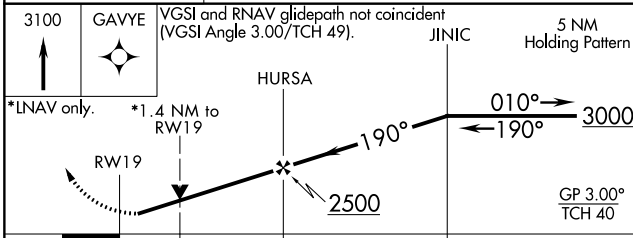
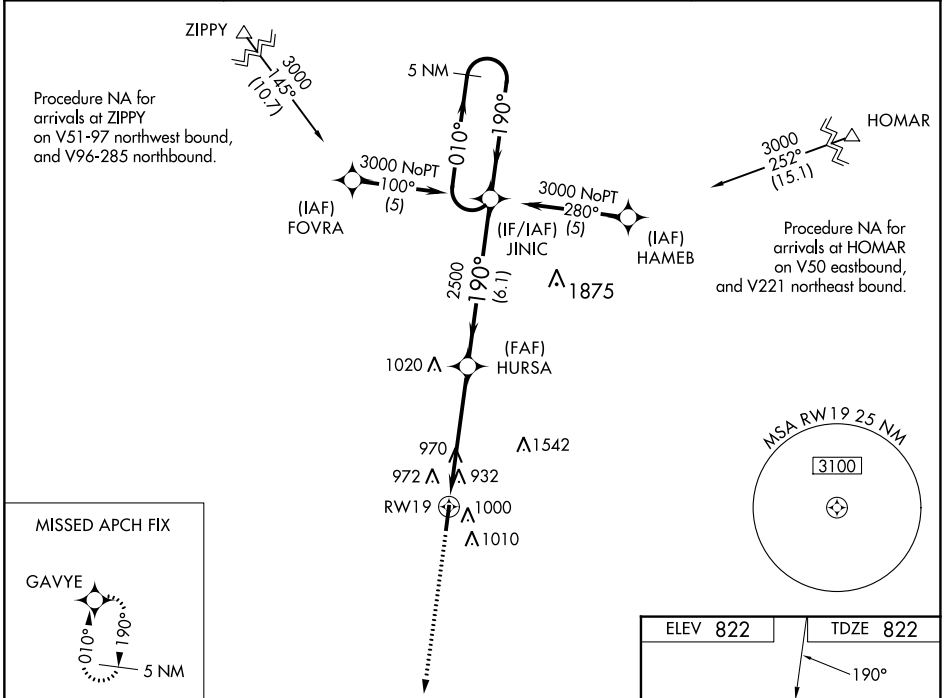


WAAS CH <b>53703</b> <b>W19A</b>	APP CRS <b>190°</b>	Rwy Idg TDZE Apt Elev	<b>5002</b> <b>822</b> <b>822</b>
--	------------------------	-----------------------------	---

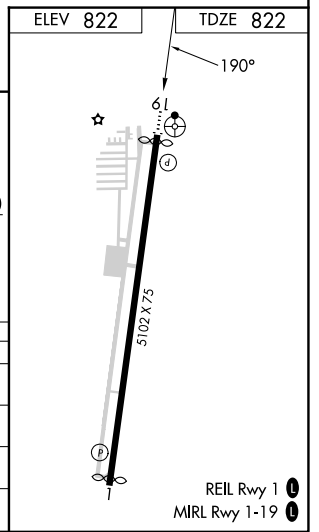
# RNAV (GPS) RWY 19

INDY SOUTH GREENWOOD (HFY)

RNP APCH.	<p>For uncompensated Baro-VNAV systems, LNAV/VNAV NA below -16°C or above 54°C. Baro-VNAV and VDP NA when using Indianapolis Int altimeter setting. Rwy 19 helicopter visibility reduction below ¾ SM NA.</p>	ODALS	MISSED APPROACH: Climb to 3100 direct GAVYE and hold.
AWOS-3P <b>118.525</b>	INDIANAPOLIS APP CON <b>124.95 317.8</b>	GCO <b>121.725</b>	UNICOM <b>123.0 (CTAF) 0</b>



CATEGORY	A	B	C	D
LPV DA	1130-1 308 (400-1)			NA
LNAV/VNAV DA	1299-1¾ 477 (500-1¾)			NA
LNAV MDA	1300-1	478 (500-1)	1300-1⅜ 478 (500-1⅜)	NA
CIRCLING	1360-1 538 (600-1)	1380-1 558 (600-1)	1380-1½ 558 (600-1½)	NA



EC-2, 07 SEP 2023 to 05 OCT 2023

EC-2, 07 SEP 2023 to 05 OCT 2023