

(INDIE8.INDIE) 21280

AL-6674 (FAA)

RWJ AIRPARK (54T)  
BAYTOWN, TEXAS

# INDIE EIGHT DEPARTURE (RNAV)

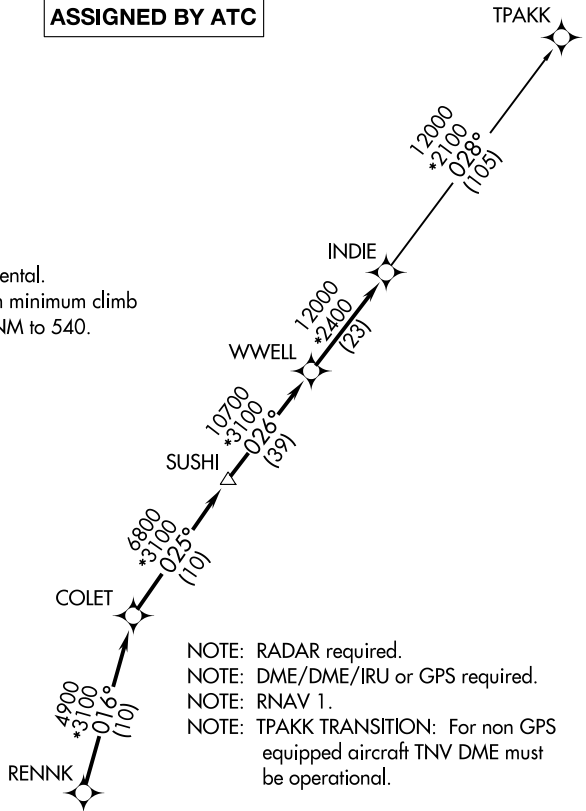
CTAF  
122.7  
HOUSTON DEP CON  
134.45 284.0

**TOP ALTITUDE:  
ASSIGNED BY ATC**

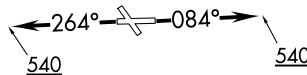
### TAKEOFF MINIMUMS

Rwys 14, 32: NA Environmental.

Rwys 8, 26: Standard with minimum climb  
of 500' per NM to 540.



NOTE: RADAR required.  
 NOTE: DME/DME/IRU or GPS required.  
 NOTE: RNAV 1.  
 NOTE: TPAKK TRANSITION: For non GPS  
 equipped aircraft TNV DME must  
 be operational.



NOTE: Chart not to scale.



### DEPARTURE ROUTE DESCRIPTION

TAKEOFF RUNWAY 8: Climb on heading 084° to 540 for RADAR vectors to RENNK, thence . . . .

TAKEOFF RUNWAY 26: Climb on heading 264° to 540 for RADAR vectors to RENNK, thence . . . .

. . . . on track 016° to COLET, then on track 025° to SUSHI, then on track 026° to WWELL, then on track 026° to INDIE, then on (transition). Maintain ATC assigned altitude. Expect filed altitude 10 minutes after departure.

TPAKK TRANSITION (INDIE8.TPAKK)

INDIE EIGHT DEPARTURE (RNAV)  
(INDIE8.INDIE) 07OCT21

BAYTOWN, TEXAS  
RWJ AIRPARK (54T)

SC-5, 07 SEP 2023 to 05 OCT 2023

SC-5, 07 SEP 2023 to 05 OCT 2023