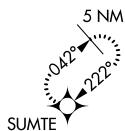
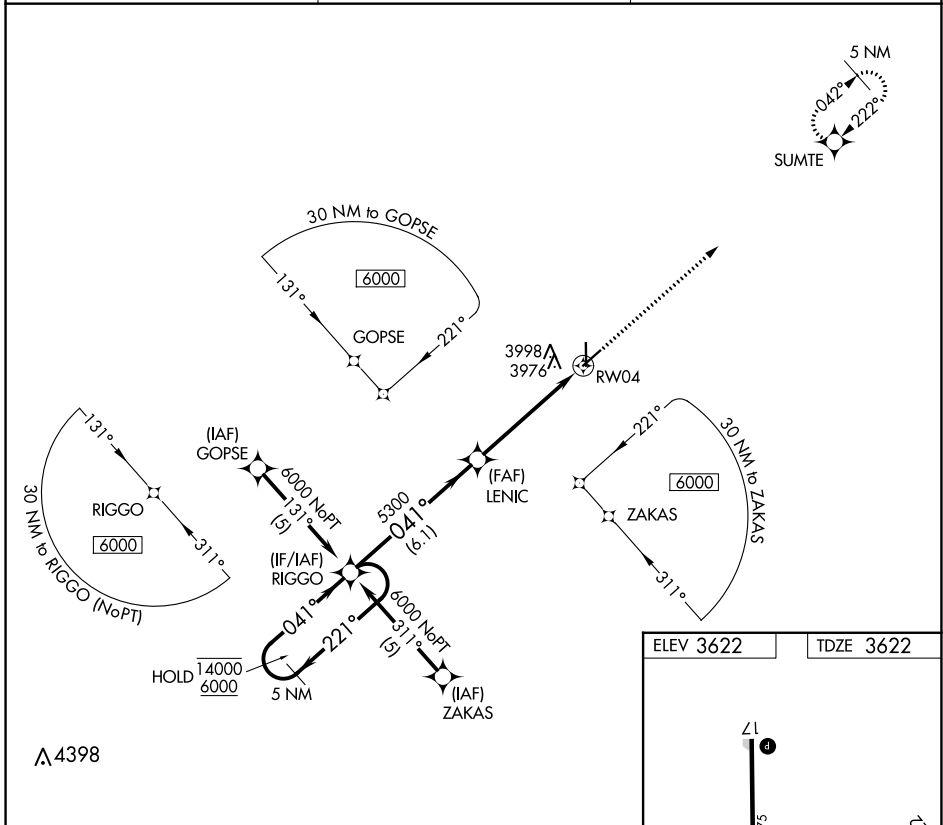


RNAV (GPS) RWY 4
ELKHART-MORTON COUNTY (EHA)

APP CRS 041°	Rwy ldg TDZE Apt Elev	4900 3622 3622
------------------------	-----------------------------	---

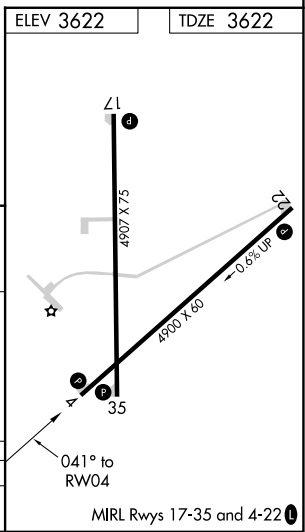
RNP APCH-GPS.	MISSED APPROACH: Climb to 6000 direct SUMTE and hold.
Rwy 4 helicopter visibility reduction below 3/4 SM NA.	

AWOS-3P 118.025	KANSAS CITY CENTER 134.0 257.625	UNICOM 122.8 (CTAF) 0
---------------------------	--	---------------------------------



NC-2, 07 SEP 2023 to 05 OCT 2023

NC-2, 07 SEP 2023 to 05 OCT 2023



5 NM Holding Pattern	RIGGO	LENIC	RWY 4
14000 6000	← 221°	← 041°	← 041°
	6.1 NM	3 NM	2.1 NM
CATEGORY	A	C	D
LNAV MDA	4340-1 718 (800-1)	4340-2 718 (800-2)	NA