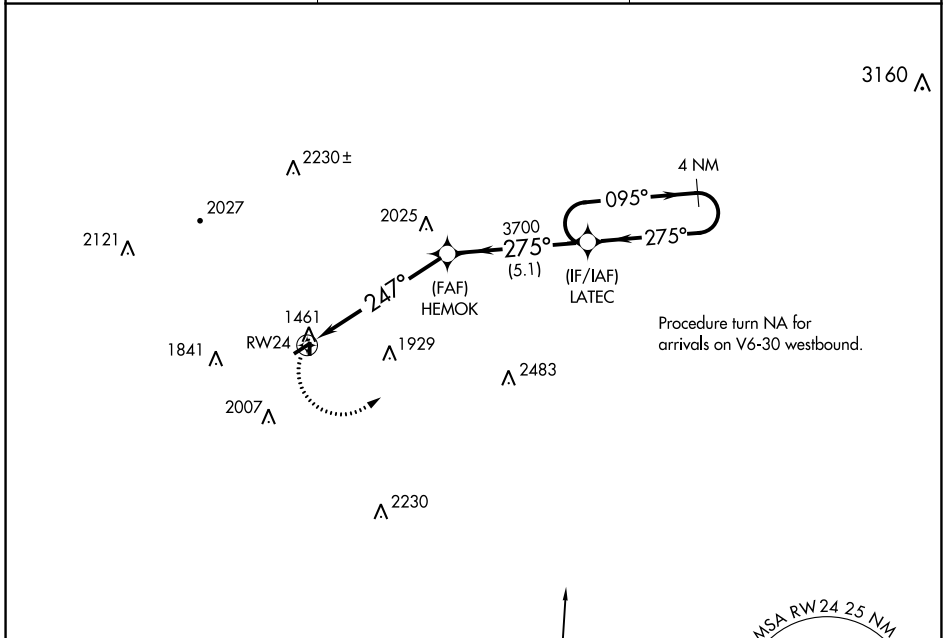


APP CRS <b>247°</b>	Rwy Idg TDZE Apt Elev	<b>3003</b> <b>1439</b> <b>1445</b>
------------------------	-----------------------------	---

# RNAV (GPS) RWY 24

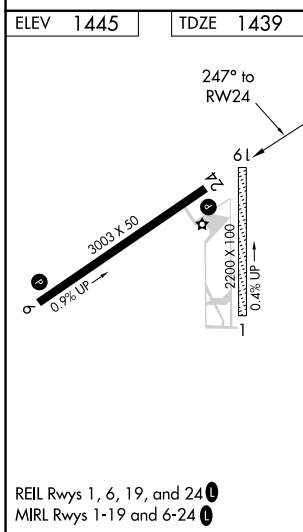
PUNXSUTAWNEY MUNI (N35)

RNP APCH - GPS.		MISSED APPROACH: Climbing left turn to 4000 direct LATEC and hold.
<p>▼ Use Indiana County/Jimmy Stewart Field altimeter setting. Helicopter visibility reduction below 3/4 SM NA. Circling NA to Rwy's 1, 19.</p> <p>▲ NA</p>		
IDI AWOS-3 <b>126.625</b>	CLEVELAND CENTER <b>126.725 291.65</b>	UNICOM <b>123.0 (CTAF) 0</b>



NE-4, 07 SEP 2023 to 05 OCT 2023

NE-4, 07 SEP 2023 to 05 OCT 2023



4000	LATEC	VGSI and descent angles not coincident (VGSI Angle 4.00/TCH 40).	4 NM Holding Pattern	
CATEGORY	A	B	C	D
LNAV MDA	2160-1	721 (800-1)	NA	
CIRCLING	2160-1 715 (800-1)	2260-1 1/4 815 (900-1 1/4)	NA	