

RNAV (GPS) RWY 6

MONTAUK (MTP)

| | | |
|---------|----------|------|
| APP CRS | Rwy Idg | 2944 |
| 062° | TDZE | 6 |
| | Apt Elev | 7 |

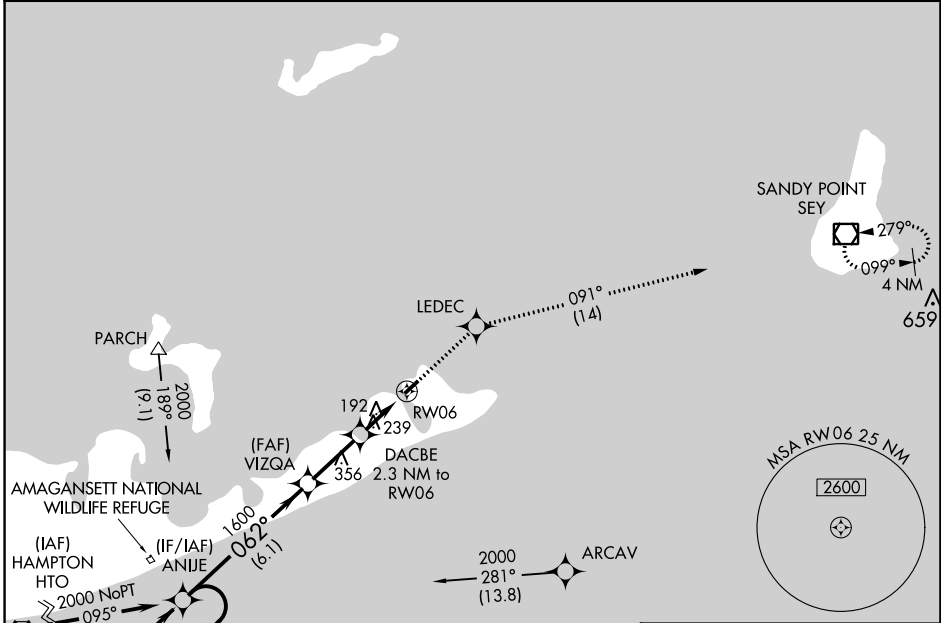
RNP APCH - GPS.

▼ Use Graton-New London altimeter setting; when not received, use Block Island State altimeter setting; increase all MDA 20 feet and visibility LNAV Cats C and D 1/8 SM and Circling Cat D 1/4 SM. Procedure NA at night. Helicopter visibility reduction below 1 SM NA.

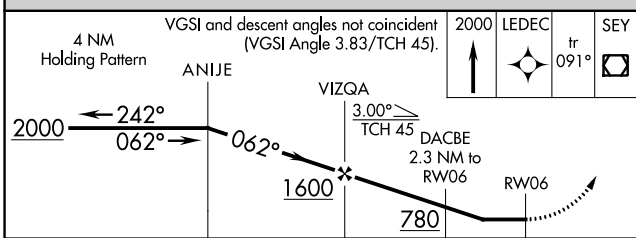
▲ NA

MISSED APPROACH:
Climb to 2000 direct LEDEC and on track 091° to SEY VOR/DME and hold.

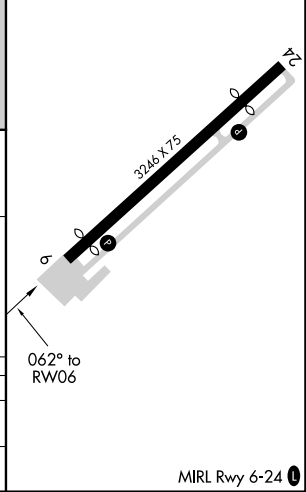
| | | | |
|--------------------------|---|-------------------------------|----------------|
| GON ASOS 127.0 | NEW YORK APP CON 125.975 343.65 | UNICOM 122.7 (CTAF) | 121.7 0 |
|--------------------------|---|-------------------------------|----------------|



Procedure NA for arrivals on HTO VORTAC airway radials 039 CW 079.



| | |
|--------|--------|
| ELEV 7 | TDZE 6 |
|--------|--------|



| CATEGORY | A | B | C | D |
|----------|-------|-------------|------------------------|------------------------|
| LNAV MDA | 540-1 | 534 (600-1) | 540-1½ | 534 (600-1½) |
| CIRCLING | 580-1 | 573 (600-1) | 580-1½ 573 (600-1½) | 740-2¼ 733 (800-2¼) |

NE-2, 07 SEP 2023 to 05 OCT 2023

NE-2, 07 SEP 2023 to 05 OCT 2023