

BONHAM, TEXAS

AL-6722 (FAA)

22307

WAAS CH <b>99523</b> <b>W17A</b>	APP CRS <b>176°</b>	Rwy Idg TDZE Apt Elev	<b>4000</b> <b>618</b> <b>618</b>
--	------------------------	-----------------------------	---

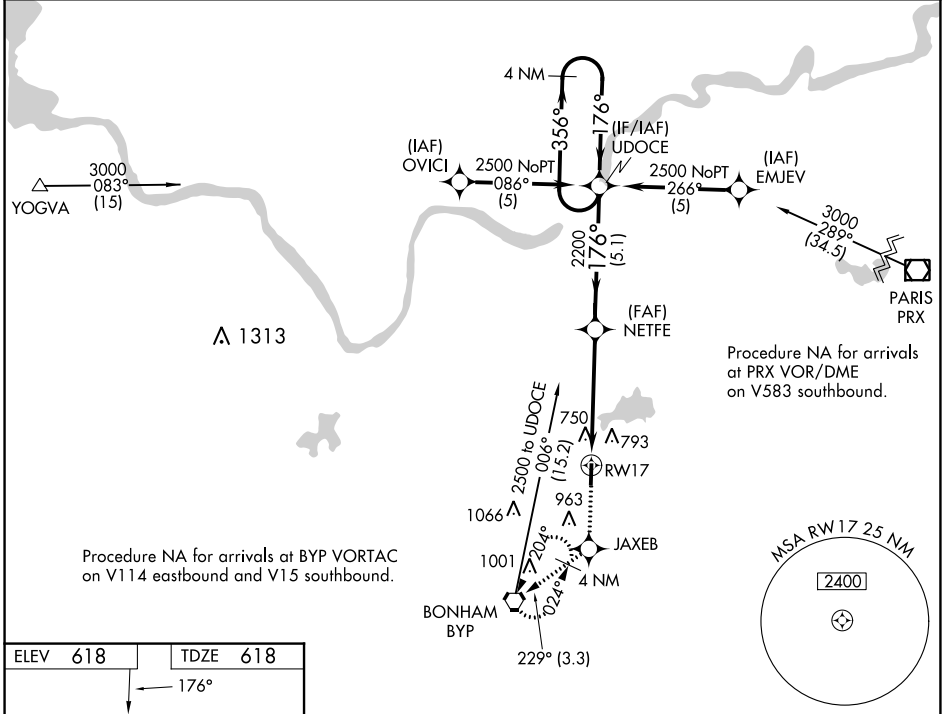
# RNAV (GPS) RWY 17

JONES FLD (F00)

**NA** Baro-VNAV NA. When local altimeter setting not received, use Durant altimeter setting.  
DME/DME RNP-0.3 NA.

**MISSED APPROACH:** Climb to 2500 direct JAXEB and on track 229° to BYP VORTAC and hold.

AWOS-3 PT <b>118.05</b>	FORT WORTH CENTER <b>127.6 254.3</b>	UNICOM <b>122.8(CTAF)</b>
----------------------------	---	------------------------------



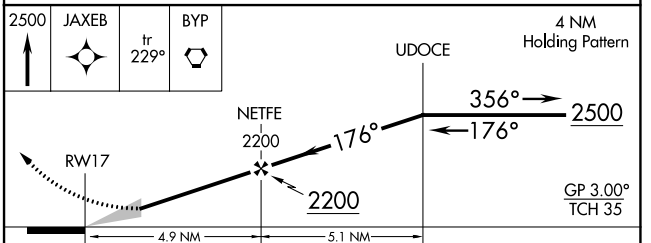
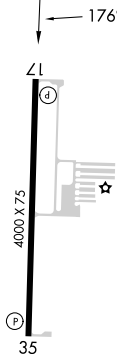
Procedure NA for arrivals at BYP VORTAC on V114 eastbound and V15 southbound.

Procedure NA for arrivals at PRX VOR/DME on V583 southbound.

SC-2, 07 SEP 2023 to 05 OCT 2023

SC-2, 07 SEP 2023 to 05 OCT 2023

ELEV 618	TDZE 618
----------	----------



CATEGORY	A	B	C	D
LPV DA	906-1	288 (300-1)		NA
LNAV/VNAV DA	1030-1 <sup>3</sup> / <sub>8</sub>	412 (500-1 <sup>3</sup> / <sub>8</sub> )		NA
LNAV MDA	1180-1	562 (600-1)		NA
CIRCLING	1240-1 622 (700-1)	1400-1 782 (800-1)		NA

BONHAM, TEXAS  
Amdt 2B 20MAY21

33°37'N-96°11'W

# RNAV (GPS) RWY 17

JONES FLD (F00)