

WAAS CH <b>87108</b> <b>W18A</b>	APP CRS <b>181°</b>	Rwy Idg TDZE Apt Elev	<b>5001</b> <b>685</b> <b>685</b>
--	------------------------	-----------------------------	---

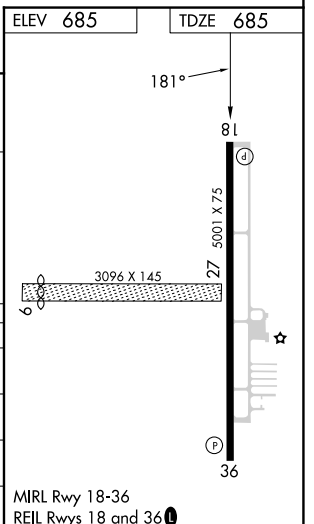
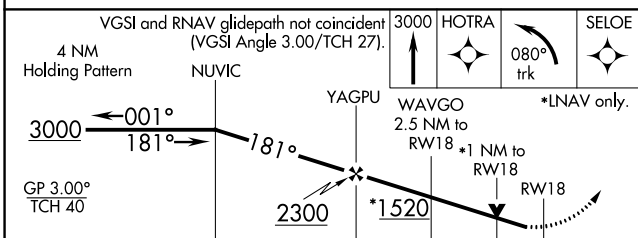
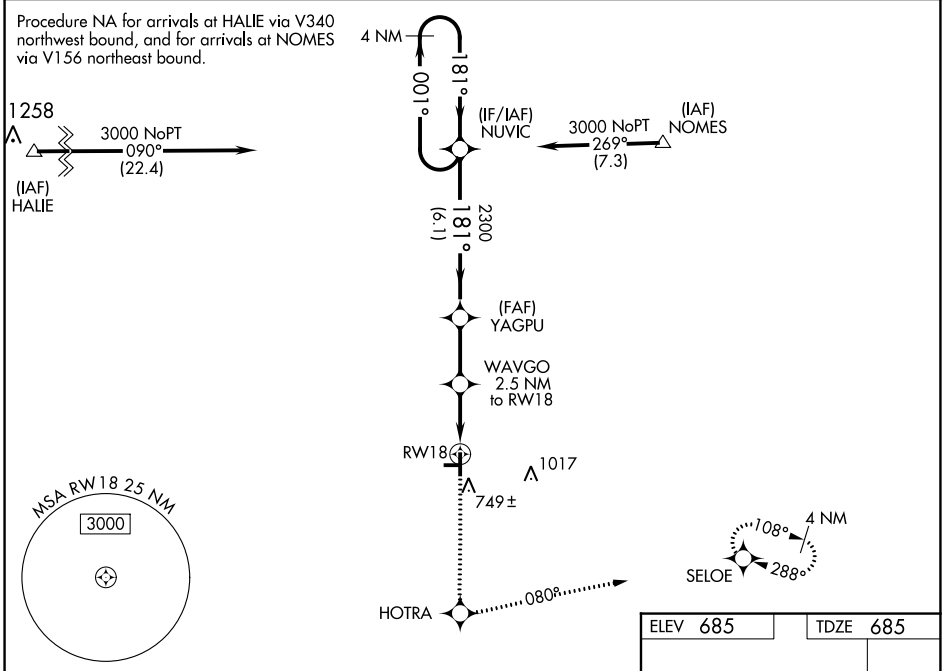
# RNAV (GPS) RWY 18

STARKE COUNTY(OXI)

**▼** DME/DME RNP-0.3 NA. Visibility reduction by helicopters NA. For uncompensated Baro-VNAV systems, LNAV/VNAV NA below -16°C (4°F) or above 47°C (116°F). Baro-VNAV and VDP NA when using South Bend altimeter setting. When local altimeter setting not received, use South Bend altimeter setting: increase LPV DA to 1015 feet and visibility all Cats ¼ SM; increase LNAV/VNAV DA to 1115 feet and visibility all Cats ¼ SM; increase all MDA 80 feet and visibility LNAV and Circling Cat C and D ¼ SM. Circling NA to Rwy 9 and 27.

**MISSED APPROACH:**  
Climb to 3000 direct HOTRA and left turn via 080° track to SELOE and hold.

AWOS-3 <b>135.775</b>	SOUTH BEND APP CON* <b>132.05 257.8</b>	UNICOM <b>122.8 (CTAF) 0</b>
--------------------------	--	---------------------------------



CATEGORY	A	B	C	D
LPV DA		935-1	250 (300-1)	
LNAV/ VNAV DA		1035-1¼	350 (400-1¼)	
LNAV MDA	1040-1	355 (400-1)		1040-1¼ 355 (400-1¼)
CIRCLING	1120-1 435 (500-1)	1140-1 455 (500-1)	1380-2 695 (700-2)	1380-2¼ 695 (700-2¼)

EC-2, 07 SEP 2023 to 05 OCT 2023

EC-2, 07 SEP 2023 to 05 OCT 2023