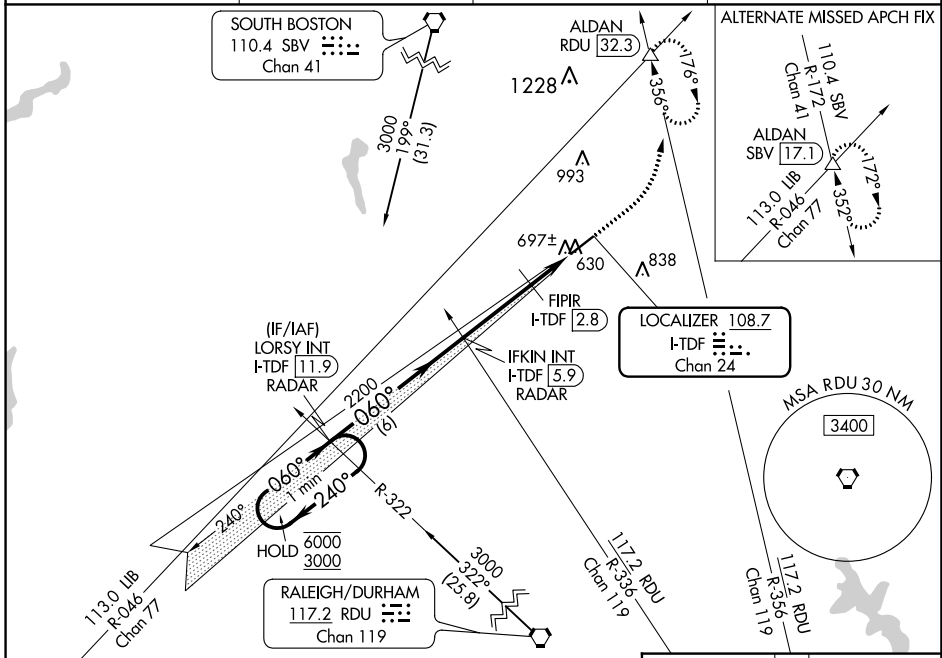


LOC/DME I-TDF <b>108.7</b> Chan 24	APP CRS <b>060°</b>	Rwy Idg TDZE Apt Elev	<b>5702</b> <b>604</b> <b>609</b>
--	------------------------	-----------------------------	---

# ILS or LOC RWY 6

RALEIGH RGNL AT PERSON COUNTY (TDF)

<p><b>▼</b> For inop ALS, S-LOC 6 visibility Cats C/D to 1 3/4 SM and increase FIPR fix minimums S-LOC 6 visibility Cats C/D to 1 SM.</p> <p><b>▲</b> NA</p>	<p><b>MALSR</b></p>	<p>MISSED APPROACH: Climb to 1500 then climbing left turn to 3000 on heading 021° and on RDU VORTAC R-356 to ALDAN INT/RDU 32.3 DME and hold, continue climb-in-hold to 3000.</p>	
<p>AWOS-3 <b>126.725</b></p>	<p>RALEIGH APP CON <b>132.35 256.9</b></p>	<p>GCO <b>119.7</b></p>	<p>UNICOM <b>122.7 (CTAF)</b></p>



CATEGORY	A	B	C	D
S-ILS 6	804-1/2 200 (200-1/2)			
S-LOC 6	1220-1/2	616 (700-1/2)	1220-1 3/8	616 (700-1 3/8)
CIRCLING	1220-1	611 (700-1)	1300-2	1300-2 1/4
			691 (700-2)	691 (700-2 1/4)
FIPR FIX MINIMUMS				
S-LOC 6	980-1/2	376 (400-1/2)	980-5/8	376 (400-5/8)
CIRCLING	1080-1	471 (500-1)	1300-2	1300-2 1/4
			691 (700-2)	691 (700-2 1/4)

SE-2, 07 SEP 2023 to 05 OCT 2023

SE-2, 07 SEP 2023 to 05 OCT 2023