

WAAS CH 50510 W24A	APP CRS 240°	Rwy Idg TDZE Apt Elev	6005 609 609
--	------------------------	-----------------------------	---

RNAV (GPS) RWY 24
RALEIGH RGNL AT PERSON COUNTY (TDF)

RNP APCH.

- ▼ Rwy 24 helicopter visibility reduction below ¾ SM NA. For uncompensated
- ▲ Baro-VNAV systems, LNAV/VNAV NA below -16°C or above 54°C.

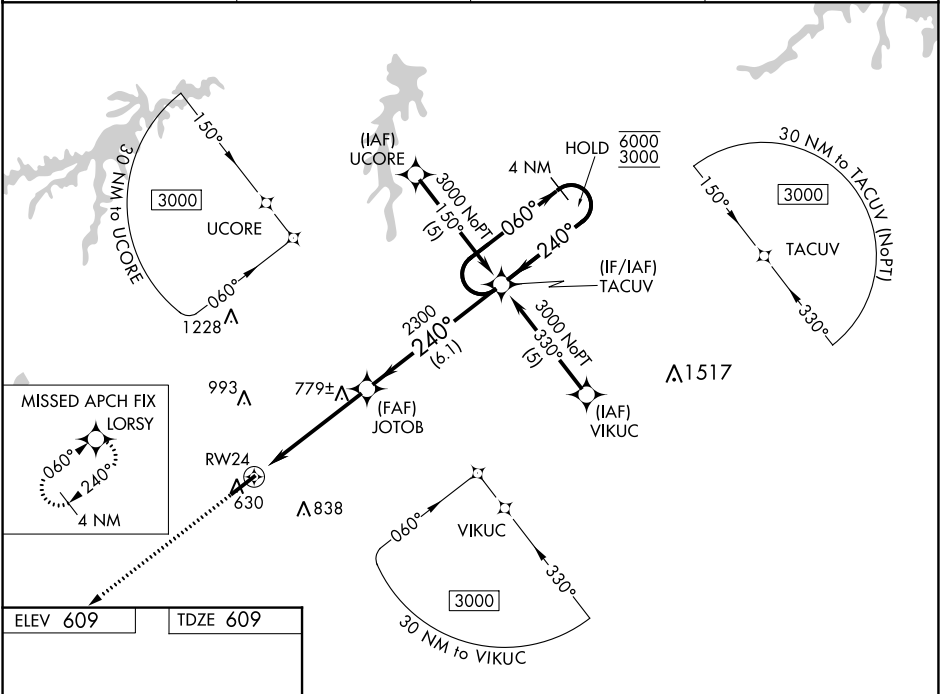
MISSED APPROACH:
Climb to 3000 direct
LORSY and hold.

AWOS-3
126.725

RALEIGH APP CON
132.35 256.9

GCO
119.7

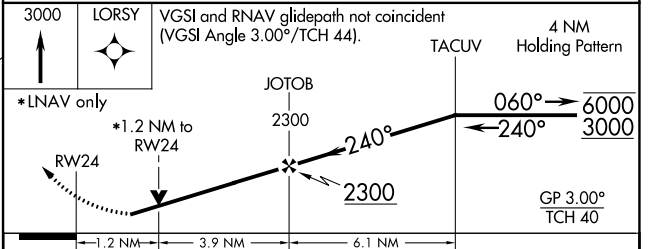
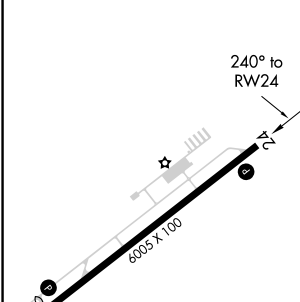
UNICOM
122.7 (CTAF) 0



SE-2, 07 SEP 2023 to 05 OCT 2023

SE-2, 07 SEP 2023 to 05 OCT 2023

ELEV 609	TDZE 609
-----------------	-----------------



CATEGORY	A	B	C	D
LPV DA		920-1	311 (400-1)	
LNAV/VNAV DA		997-1½	388 (400-1½)	
LNAV MDA	1040-1	431 (500-1)	1040-1¼ 431 (500-1¼)	1040-1½ 431 (500-1½)
CIRCLING	1080-1	471 (500-1)	1300-2 691 (700-2)	1300-2¼ 691 (700-2¼)

REIL Rwy 24 0
MIRL Rwy 6-24 0