

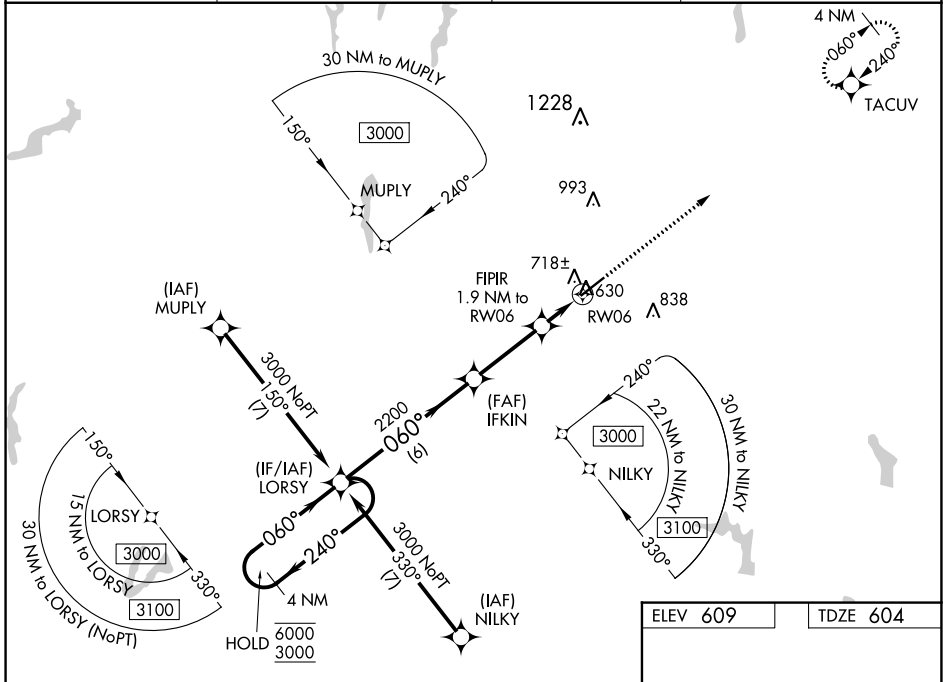
WAAS CH <b>86512</b> <b>W06A</b>	APP CRS <b>060°</b>	Rwy Idg TDZE Apt Elev	<b>5702</b> <b>604</b> <b>609</b>
--	------------------------	-----------------------------	---

# RNAV (GPS) RWY 6

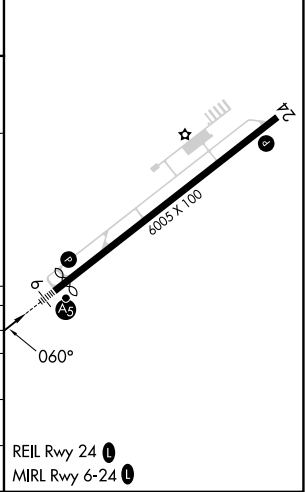
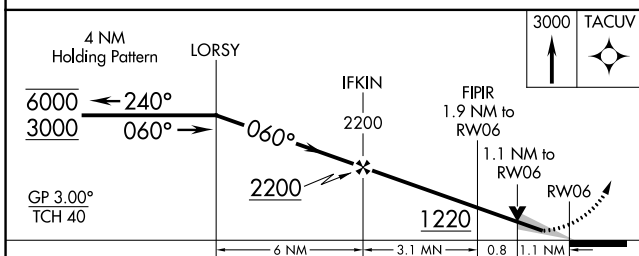
RALEIGH RGNL AT PERSON COUNTY (TDF)

RNP APCH - GPS.	MALSR	MISSED APPROACH: Climb to 3000 direct TACUV and hold.
<p><b>⚠</b> For uncompensated Baro-VNAV systems, LNAV/VNAV NA below -16°C or above 54°C. For inop ALS, increase LNAV/VNAV all Cats visibility to ½ SM and LNAV Cat C/D visibility to 1 SM.</p>		

AWOS-3 <b>126.725</b>	RALEIGH APP CON <b>132.35 256.9</b>	GCO <b>119.7</b>	UNICOM <b>122.7 (CTAF) 0</b>
--------------------------	--	---------------------	---------------------------------



ELEV 609	TDZE 604
----------	----------



CATEGORY	A	B	C	D
LPV DA		804-½	200 (200-½)	
LNAV/VNAV DA		879-½	275 (300-1½)	
LNAV MDA	980-½	376 (400-½)	980-⅝	376 (400-⅝)
CIRCLING	1080-1	471 (500-1)	1300-2 691 (700-2)	1300-2¼ 691 (700-2¼)

SE-2, 07 SEP 2023 to 05 OCT 2023

SE-2, 07 SEP 2023 to 05 OCT 2023