

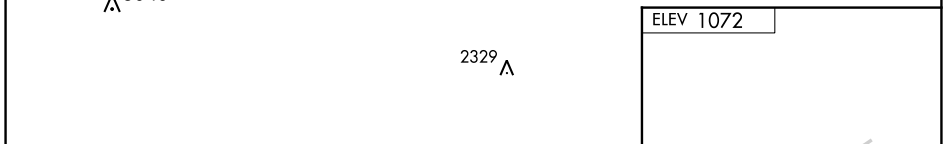
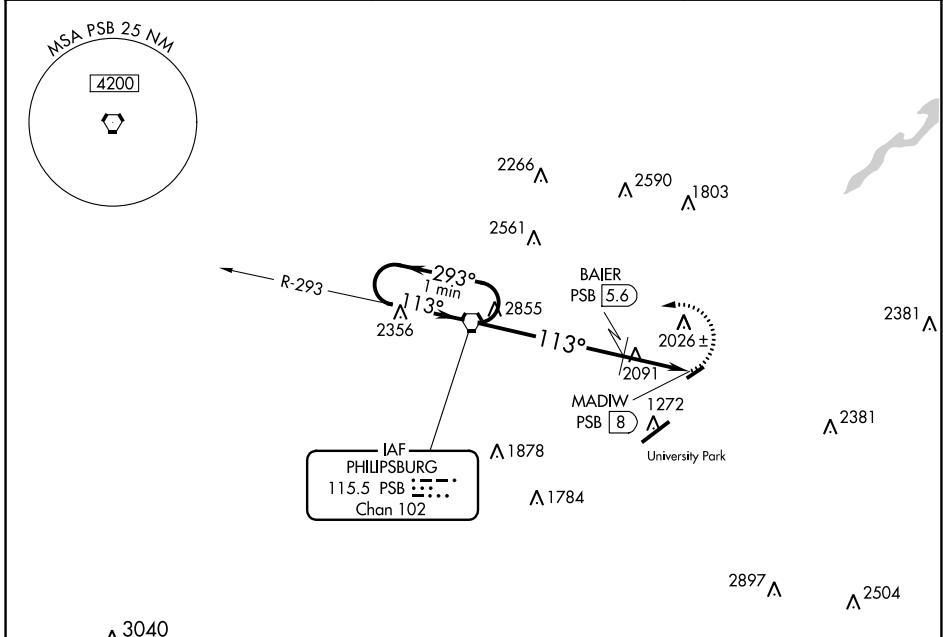
VORTAC PSB <b>115.5</b> Chan <b>102</b>	APP CRS <b>113°</b>	Rwy Idg TDZE Apt Elev <b>1072</b>	<b>N/A</b> <b>N/A</b>
---	------------------------	---	--------------------------

**VOR-A**  
BELLEFONTE (N96)

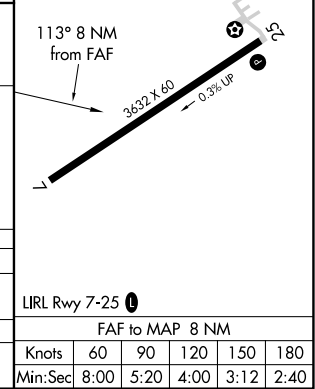
**NA** Rwy 7 helicopter visibility reduction below 1 SM NA. Procedure NA at night. Use State College altimeter setting, when not received use Clearfield altimeter setting and increase all MDA 140 feet. Circling NA southeast of Rwy 7-25.

MISSED APPROACH: Climbing left turn to 4000 direct PSB VORTAC and hold.

UNV AWOS-3 <b>127.65</b>	NEW YORK CENTER <b>134.8 338.3</b>	CLNC DEL <b>125.725</b>	CLNC DEL <b>118.55</b> (When twr closed)	UNICOM <b>122.8</b> (CTAF)	<b>122.7</b> <b>0</b>
-----------------------------	---------------------------------------	----------------------------	--	-------------------------------	-----------------------



One Minute Holding Pattern	PSB VORTAC	*3060 when using Clearfield altimeter setting.	4000 PSB
4000	← 293°	→ 113°	↘ 113°
			*2920
		5.6 NM	2.4 NM
CATEGORY	A	B	C
CIRCLING	2920-1¼ 1848 (1900-1¼)	2920-1½ 1848 (1900-1½)	NA
BAIER FIX MINIMUMS (DME REQUIRED)			
CIRCLING	2360-1¼ 1288 (1300-1¼)	2380-1½ 1308 (1400-1½)	NA



NE-4, 07 SEP 2023 to 05 OCT 2023

NE-4, 07 SEP 2023 to 05 OCT 2023

LIRL Rwy 7-25 <b>0</b>	FAF to MAP 8 NM				
Knots	60	90	120	150	180
Min:Sec	8:00	5:20	4:00	3:12	2:40