

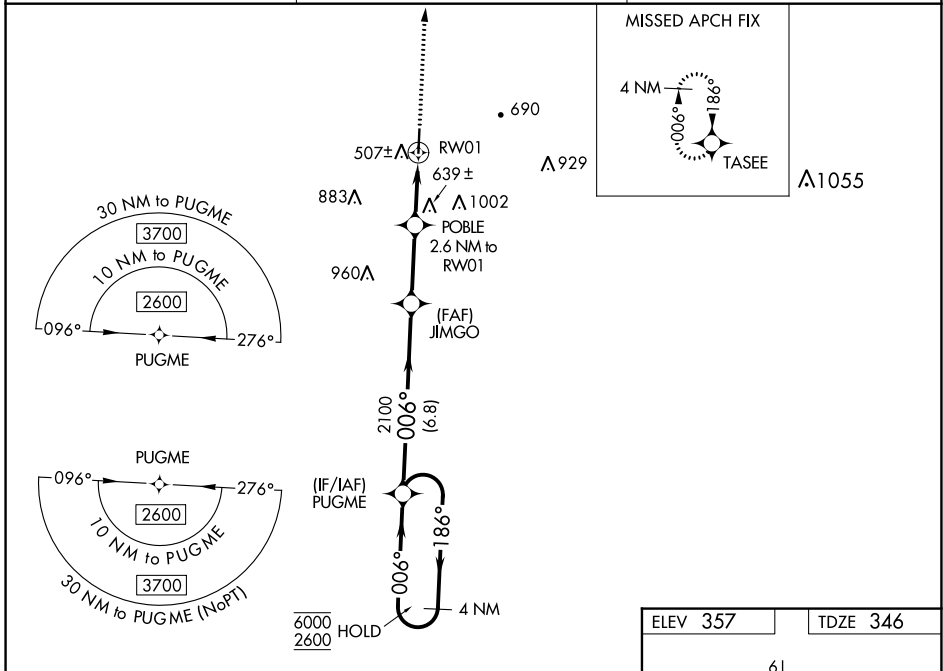
WAAS CH <b>42623</b> <b>W01A</b>	APP CRS <b>006°</b>	Rwy Idg TDZE <b>346</b> Apt Elev <b>357</b>	<b>5009</b>
--	------------------------	---	-------------

# RNAV (GPS) RWY 1

RICHARD ARTHUR FLD (M95)

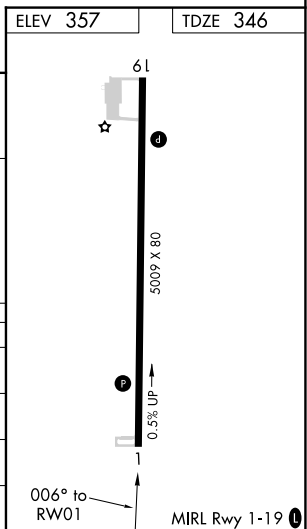
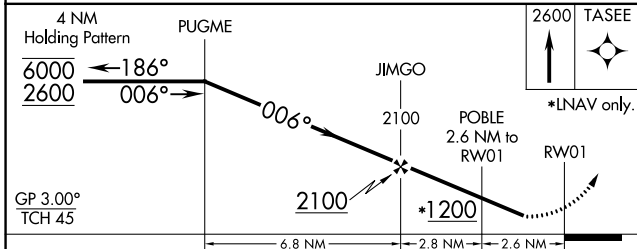
RNP APCH.	<p>Procedure NA at night. Rwy 1 helicopter visibility reduction below 1 SM NA. Baro-VNAV NA. Use Jasper altimeter setting; when not received, use Tuscaloosa altimeter setting and increase LPV DA to 680, LNAV/VNAV DA to 1008, and all MDA 20 feet; increase LNAV/VNAV all Cat visibility 1/4 SM.</p>	MISSED APPROACH: Climb to 2600 direct TASEE and hold.
-----------	---	--

JFX AWOS-3PT <b>119.225</b>	COLUMBUS APP CON * <b>126.075 239.25</b>	UNICOM <b>122.8 (CTAF) 0</b>
--------------------------------	---	---------------------------------



SE-4, 07 SEP 2023 to 05 OCT 2023

SE-4, 07 SEP 2023 to 05 OCT 2023



CATEGORY	A	B	C	D
LPV DA	679-1 1/8 333 (400-1 1/8)			
LNAV/VNAV DA	1007-2 1/4 661 (700-2 1/4)			
LNAV MDA	980-1	634 (700-1)	980-1 7/8	634 (700-1 7/8)
CIRCLING	1020-1 663 (700-1)	1060-1 703 (800-1)	1400-3	1043 (1100-3)