

| | | |
|-------------|----------|-------------|
| APP CRS | Rwy Idg | 2697 |
| 320° | TDZE | 763 |
| | Apt Elev | 763 |

RNAV (GPS) RWY 32

EPHRAIM/GIBRALTAR (3D2)

RNP APCH - GPS.

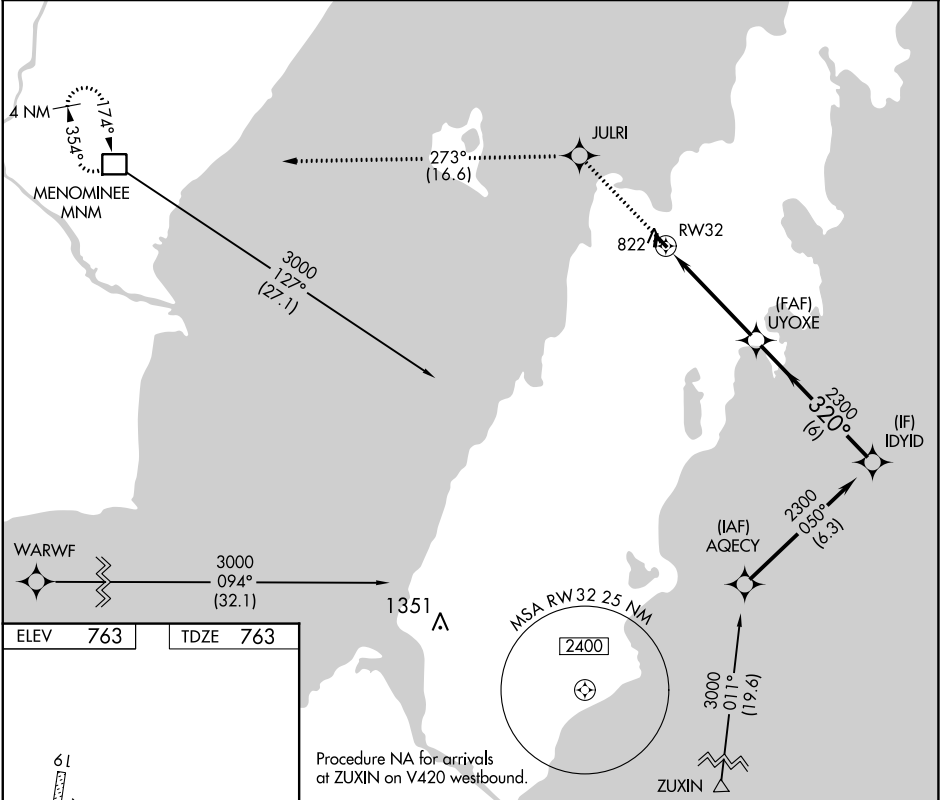
MISSED APPROACH: Climb to 3000 direct JULRI and on track 273° to MNM DME and hold.

Procedure NA at night. Rwy 32 helicopter visibility reduction below 3/4 SM NA.

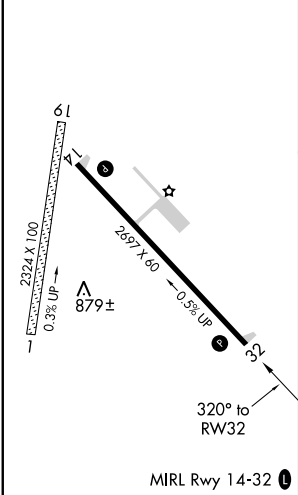
AWOS-3PT
124.175

GREEN BAY APP CON★
120.3 338.2

UNICOM
123.0 (CTAF) 0



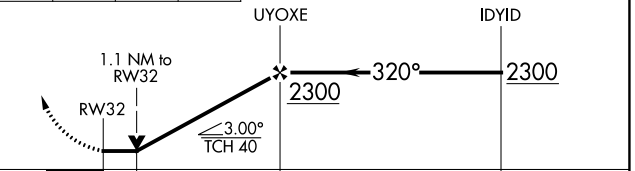
| | | | |
|------|------------|------|------------|
| ELEV | 763 | TDZE | 763 |
|------|------------|------|------------|



Procedure NA for arrivals at ZUXIN on V420 westbound.

| | | | |
|------|-------|---------|-----|
| 3000 | JULRI | tr 273° | MNM |
| ↑ | ✧ | | □ |

VGSI and descent angles not coincident (VGSI Angle 3.00/TCH 25).



| | | | | |
|----------|--------|-------------|---|----|
| CATEGORY | A | B | C | D |
| LNAV MDA | 1120-1 | 357 (400-1) | | NA |

EC-3, 07 SEP 2023 to 05 OCT 2023

EC-3, 07 SEP 2023 to 05 OCT 2023