

APP CRS	Rwy Idg	2721
001°	TDZE	919
	Apt Elev	919

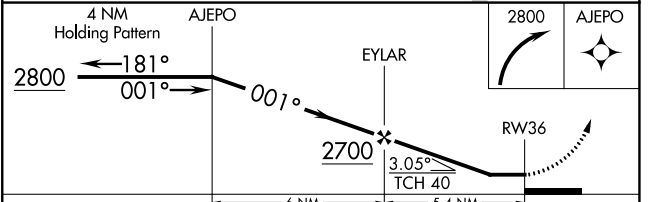
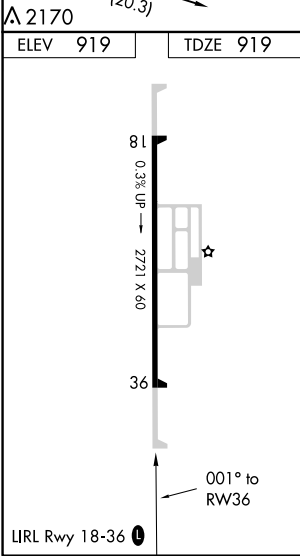
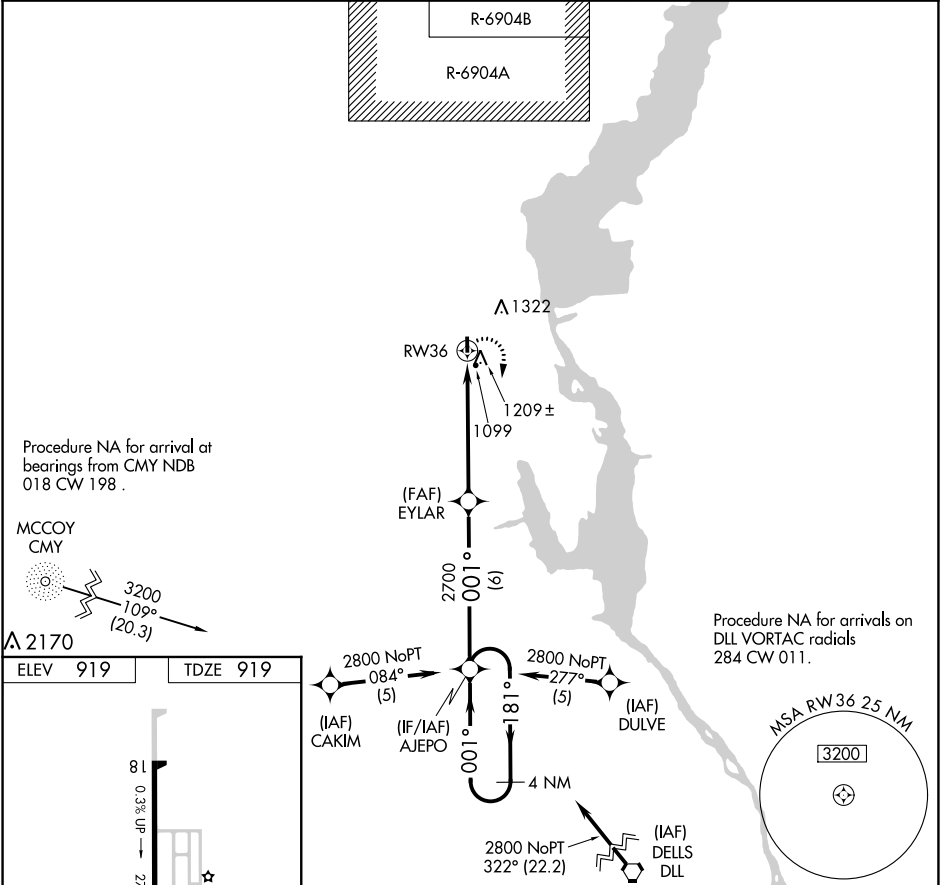
RNAV (GPS) RWY 36

NECEDAH (DAF)

▼ Rwy 36 helicopter visibility reduction below 1 SM NA.
▲ NA DME/DME-0.3 NA. Procedure NA at night. Use Wisconsin Rapids altimeter setting.

MISSED APPROACH: Climbing right turn to 2800 direct AJEPO and hold.

ISW ASOS 126.575	VOL APP CON ★ 135.25 244.875	UNICOM 122.7 (CTAF) 0
----------------------------	--	---------------------------------



CATEGORY	A	B	C	D
LNAV MDA	1540-1	621 (700-1)		NA
CIRCLING	1580-1 661 (700-1)	1700-1 781 (800-1)		NA

EC-3, 07 SEP 2023 to 05 OCT 2023

EC-3, 07 SEP 2023 to 05 OCT 2023