

# RNAV (GPS) RWY 13

COOPERSTOWN MUNI (S32)

APP CRS	Rwy Idg	<b>3500</b>
<b>129°</b>	TDZE	<b>1424</b>
	Apt Elev	<b>1424</b>

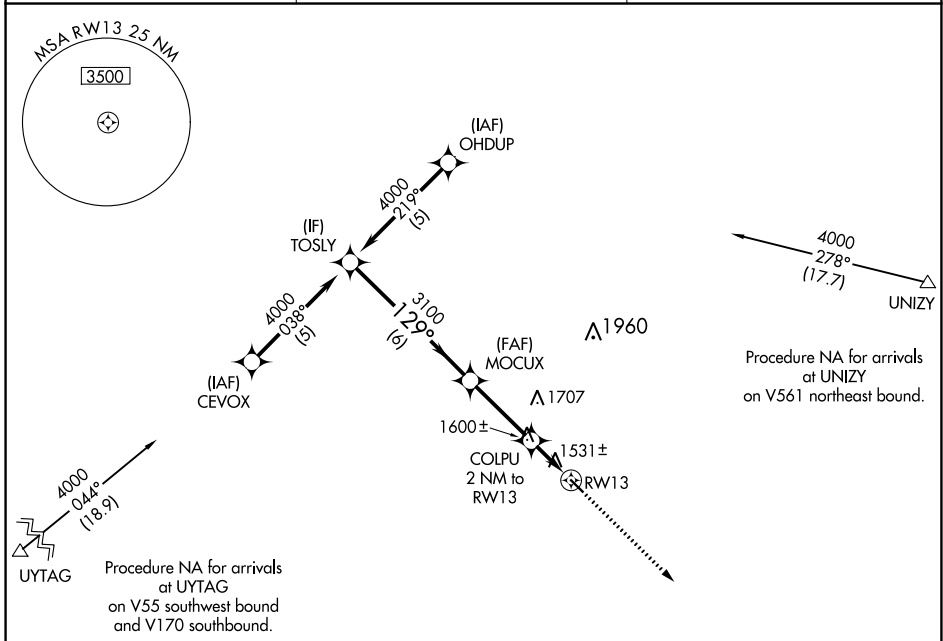
**NA** DME/DME RNP-0.3 NA. Visibility reduction by helicopters NA. When local altimeter setting not received, use Jamestown altimeter setting and increase all MDA 100 feet and increase LNAV Cat C visibility 1/4 mile.

**MISSED APPROACH:** Climb to 3100 direct RAKGU and hold.

AWOS-3  
**118.75**

MINNEAPOLIS CENTER  
**132.15 269.6**

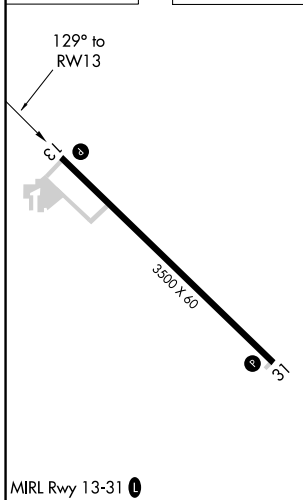
CTAF  
**122.9**



NC-1, 07 SEP 2023 to 05 OCT 2023

NC-1, 07 SEP 2023 to 05 OCT 2023

ELEV 1424	TDZE 1424
-----------	-----------



TOSLY				VGSI and descent angles not coincident (VGSI Angle 3.00/TCH 25).				3100	RAKGU
4000				129°				Procedure Turn NA	
				MOCUX				COLPU 2 NM to RW13	
				3100				3.04° TCH 40 RW13	
				2100					
				6 NM		3.1 NM		2 NM	
CATEGORY	A	B	C	D					
LNAV MDA	1860-1	436 (500-1)	1860-1¼ 436 (500-1¼)	NA					
CIRCLING	1880-1	456 (500-1)	1880-1½ 456 (500-1½)	NA					