

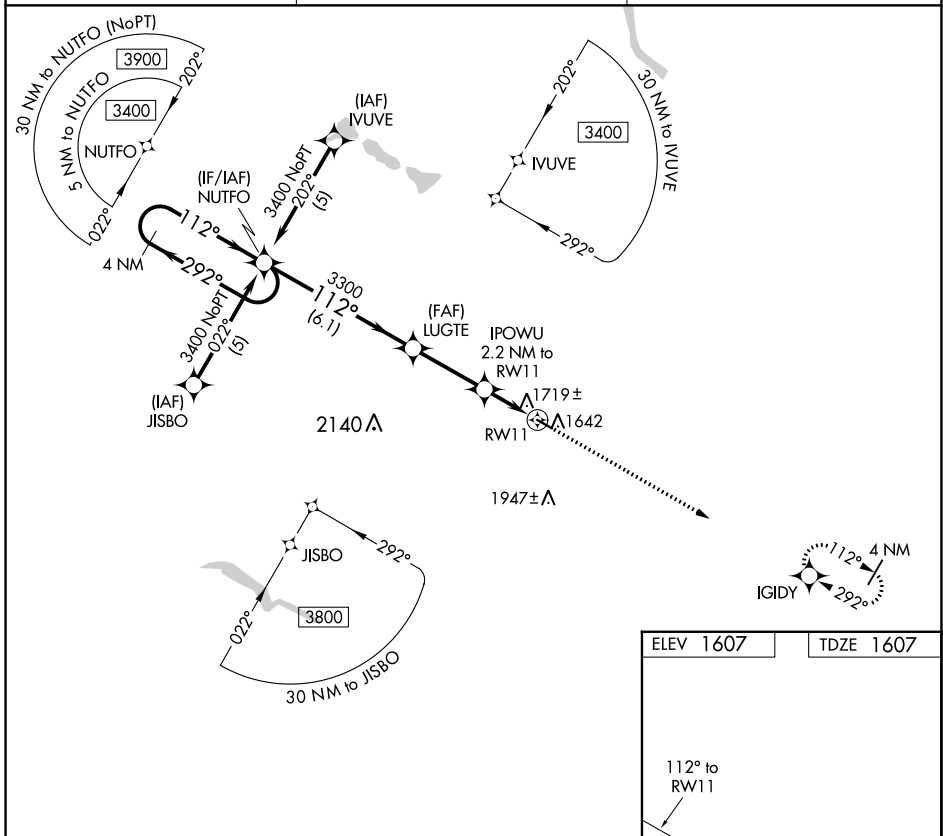
APP CRS	Rwy Idg	3600
112°	TDZE	1607
	Apt Elev	1607

RNAV (GPS) RWY 11

HARVEY MUNI (5H4)

RNP APCH.	<p>Procedure NA at night. Rwy 11 helicopter visibility reduction below 1 SM NA. When local altimeter setting not received; use Devil's Lake altimeter setting and increase all MDA 140 feet and LNAV Cat C visibility 1/2 SM.</p>	<p>MISSED APPROACH: Climb to 3300 direct IGIDY and hold.</p>
-----------	---	--

AWOS-3 118.825	MINNEAPOLIS CENTER 135.25 256.7	UNICOM 122.8 (CTAF) 1
--------------------------	---	---------------------------------



NC-1, 07 SEP 2023 to 05 OCT 2023

NC-1, 07 SEP 2023 to 05 OCT 2023

4 NM Holding Pattern NUTFO		VGSI and descent angles not coincident (VGSI Angle 3.00/TCH 27).		3300	IGIDY
3400	← 292°	→ 112°	112°	3300	IGIDY
				3.04° TCH 40	IPOWU 2.2 NM to RWY 11
				2340	RWY 11
				6.1 NM	2.9 NM
					2.2 NM
CATEGORY	A	B	C	D	
LNAV MDA	1980-1 373 (400-1)			NA	

