

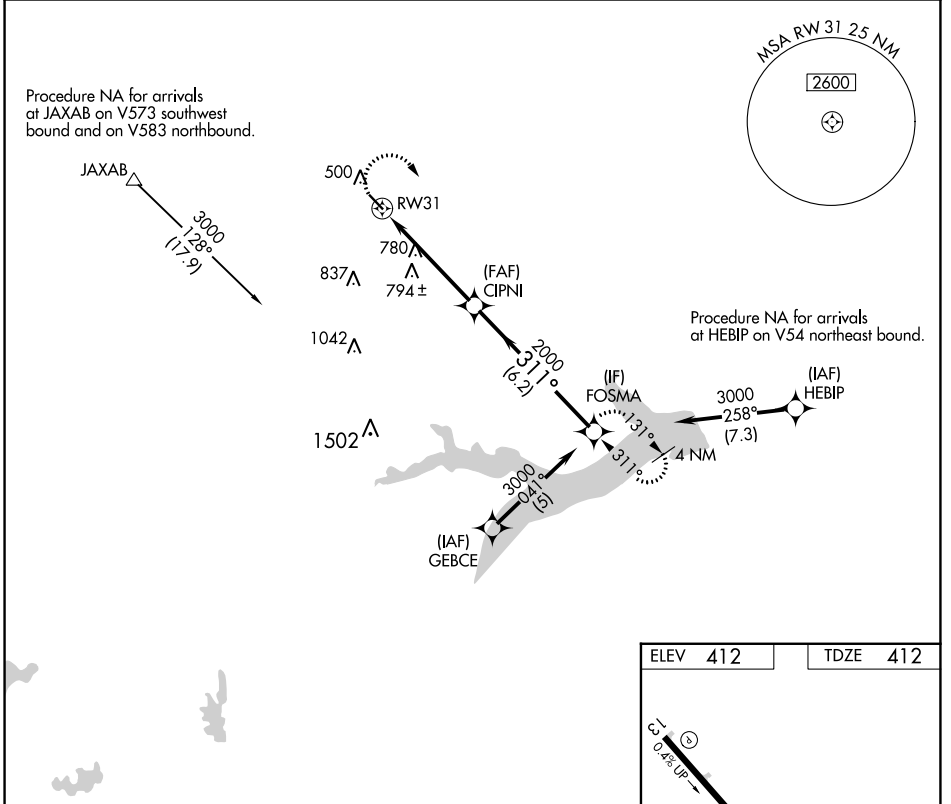
APP CRS <b>311°</b>	Rwy Idg <b>3900</b>
	TDZE <b>412</b>
	Apt Elev <b>412</b>

# RNAV (GPS) RWY 31

FRANKLIN COUNTY (F53)

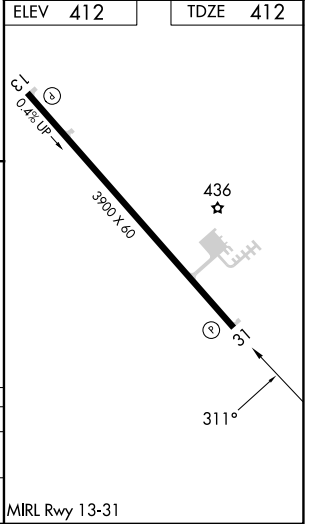
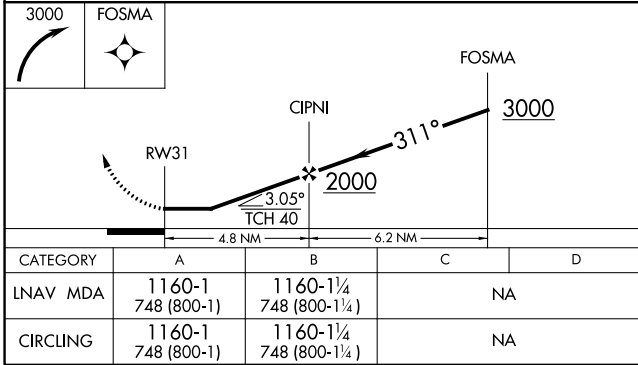
RNP APCH.	<p>▼ Circling Rwy 13 NA at night. Rwy 31 helicopter visibility reduction below 3/4 SM NA.          ▲ NA Use Mount Pleasant Rgnl altimeter setting; when not received, procedure NA.</p>	MISSED APPROACH: Climbing right turn to 3000 direct FOSMA and hold.
-----------	---	---

OSA AWOS-3 <b>119.775</b>	FORT WORTH CENTER <b>132.025 360.75</b>	UNICOM <b>123.0 (CTAF)</b>
------------------------------	--	-------------------------------



SC-2, 07 SEP 2023 to 05 OCT 2023

SC-2, 07 SEP 2023 to 05 OCT 2023



ELEV 412	TDZE 412
MOUNT VERNON, TEXAS	
Orig-B 21MAY20	
33°13'N-095°14'W	
FRANKLIN COUNTY (F53)	
<b>RNAV (GPS) RWY 31</b>	

MIRL Rwy 13-31