

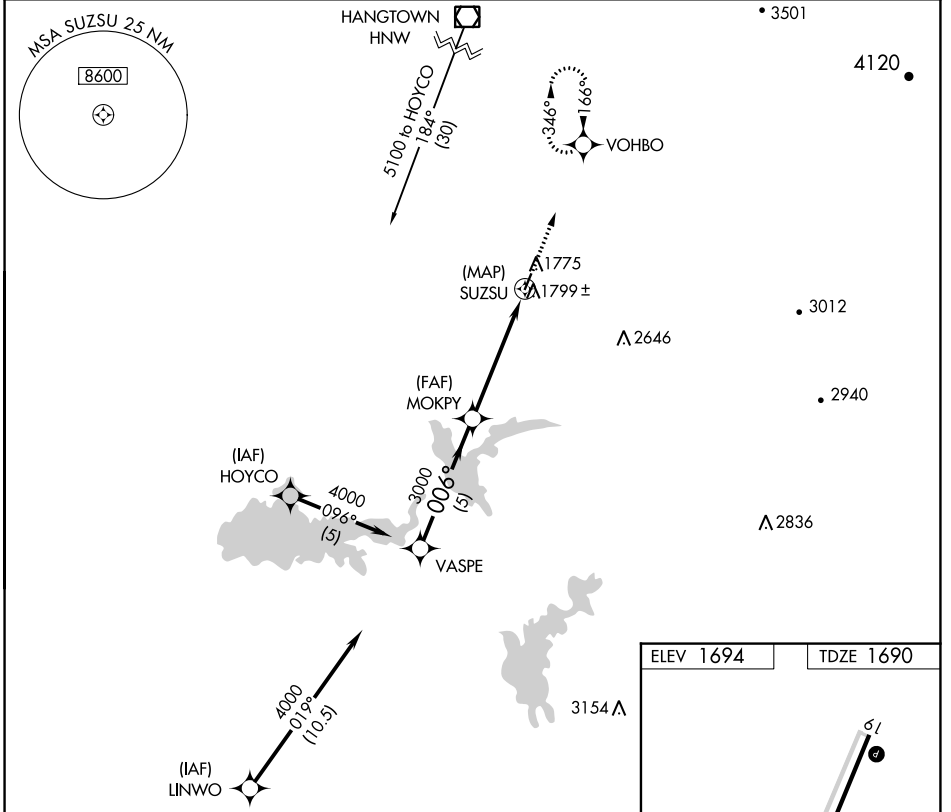
APP CRS	Rwy Idg	3401
006°	TDZE	1690
	Apt Elev	1694

GPS RWY 1

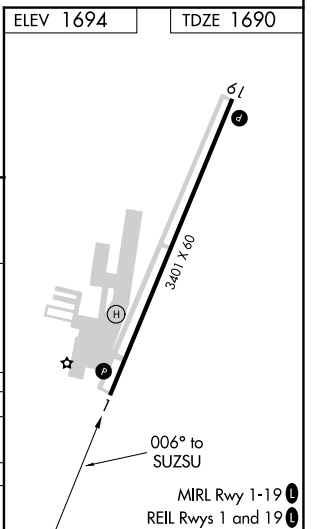
WESTOVER FLD AMADOR COUNTY (JAQ)

<p>▽ When local altimeter setting not received, use Sacramento Exec altimeter setting.</p> <p>▲NA</p>	<p>MISSED APPROACH: Climb to 4500 on 006° course to VOHBO and hold.</p>
---	---

<p>AWOS-3</p> <p>121.125</p>	<p>NORCAL APP CON</p> <p>125.1 363.2</p>	<p>UNICOM</p> <p>123.075 (CTAF) 0</p>
-------------------------------------	---	--



<p>Procedure Turn NA</p>	<p>VASPE</p> <p>4000</p> <p>006°</p>		<p>MOKPY</p> <p>3000</p>		<p>SUZSU</p> <p>4500</p> <p>006° crs</p> <p>VOHBO</p>	
	5 NM		5 NM			
CATEGORY	A	B	C	D		
S-1	2060-1	370 (400-1)	NA			
SACRAMENTO EXEC ALTIMETER SETTING MINIMUMS						
S-1	2380-1	690 (700-1)	NA			



SW-2, 07 SEP 2023 to 05 OCT 2023

SW-2, 07 SEP 2023 to 05 OCT 2023