

APP CRS	Rwy Idg	<b>5000</b>
<b>177°</b>	TDZE	<b>105</b>
	Apt Elev	<b>107</b>

# RNAV (GPS) RWY 18

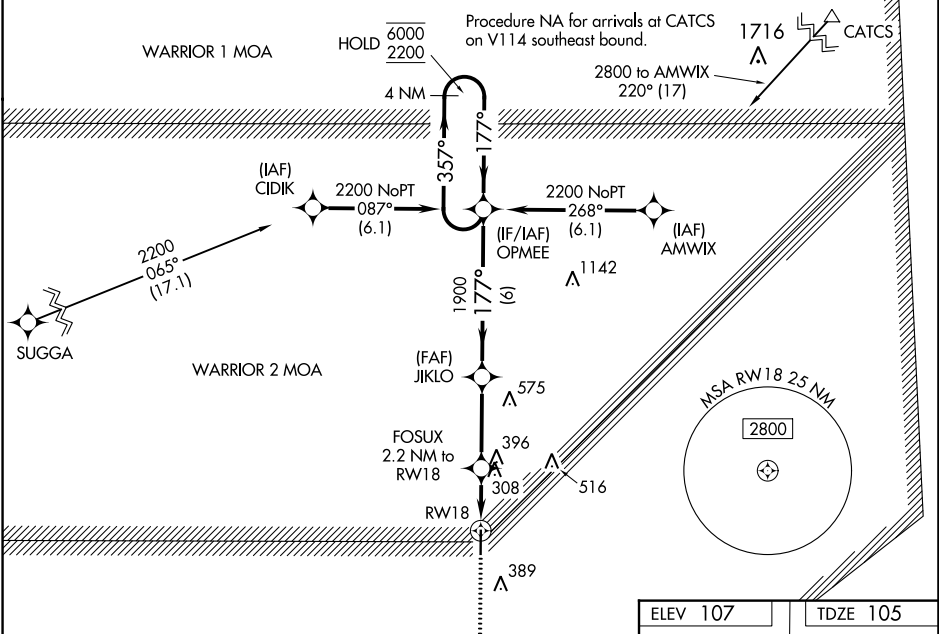
ALLEN PARISH (ACP)

RNP APCH - GPS.

**▼** Procedure NA at night. Rwy 18 helicopter visibility reduction below 1 SM NA.  
**▲** When local altimeter setting not received, use Alexandria Intl altimeter setting; increase all MDAs 100 feet and visibility LNAV Cat C ¼ SM.

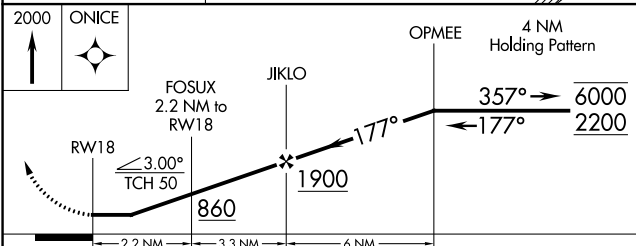
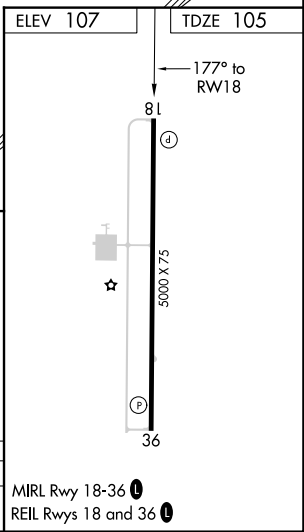
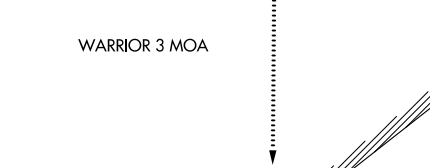
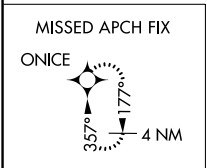
MISSED APPROACH: Climb to 2000 direct ONICE and hold.

AWOS-3PT <b>118.275</b>	POLK APP CON <b>123.7 261.3</b>	GCO <b>135.075</b>	UNICOM <b>122.8 (CTAF) ①</b>
----------------------------	------------------------------------	-----------------------	---------------------------------



SC-4, 07 SEP 2023 to 05 OCT 2023

SC-4, 07 SEP 2023 to 05 OCT 2023



CATEGORY	A	B	C	D
LNAV MDA	560-1	455 (500-1)	560-1 <sup>3</sup> / <sub>8</sub> 455 (500-1 <sup>3</sup> / <sub>8</sub> )	NA

MIRL Rwy 18-36 ①  
 REIL Rwy 18 and 36 ①