

|  |                        |   |
|--|------------------------|---|
| WAAS<br>CH <b>82414</b><br><b>W06A</b> | APP CRS<br><b>058°</b> | Rwy ldg <b>4500</b><br>TDZE <b>933</b><br>Apt Elev <b>933</b> |
|--|------------------------|---|

# RNAV (GPS) RWY 6

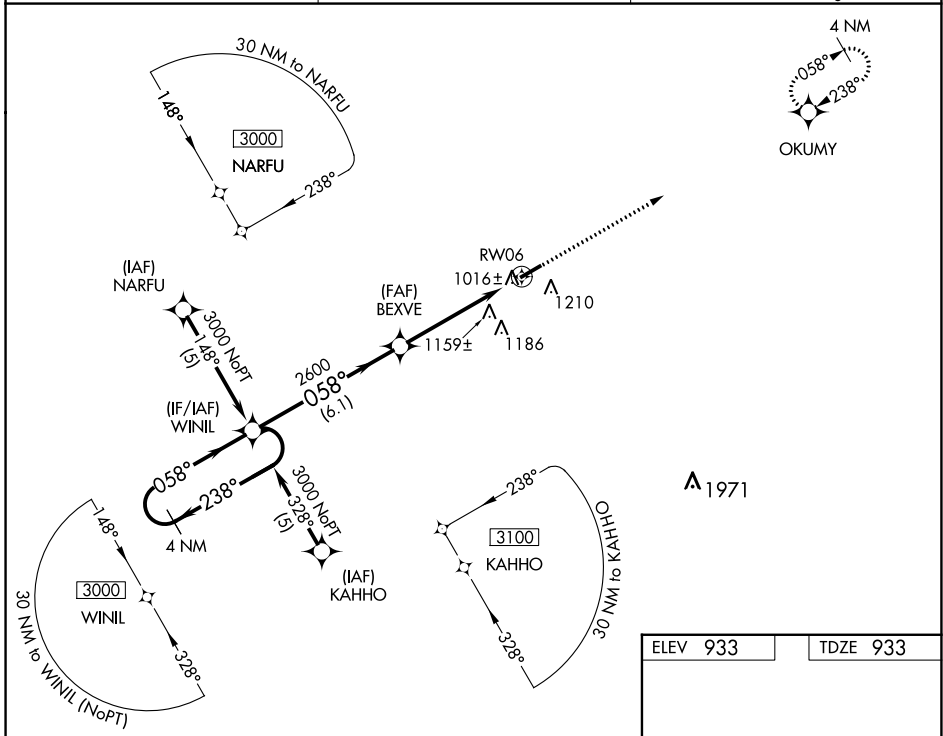
SULLIVAN RGNL (UUV)

**▼** Circling to Rwy 24 NA at night. For uncompensated Baro-VNAV systems, LNAV/VNAV NA below -16°C (4°F) or above 54°C (130°F). DME/DME RNP-0.3 NA. Visibility reduction by helicopters NA.

**▲ NA** Baro-VNAV and VDP NA when using Rolla Nil altimeter setting. When local altimeter setting not received, use Rolla Nil altimeter setting and increase all DA 98 feet and all MDA 100 feet, increase LPV Cat A and B visibility ½ mile and LNAV/VNAV Cat A and B visibility ¼ mile.

**MISSED APPROACH:** Climb to 3000 direct OKUMY and hold.

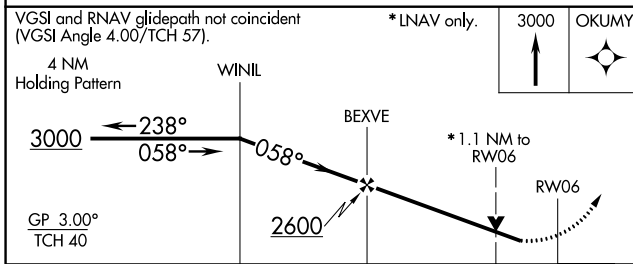
|                            |   |                                 |
|----------------------------|---|---------------------------------|
| AWOS-3PT<br><b>119.375</b> | KANSAS CITY CENTER<br><b>128.35 284.675</b> | UNICOM<br><b>122.7 (CTAF) 0</b> |
|----------------------------|---|---------------------------------|



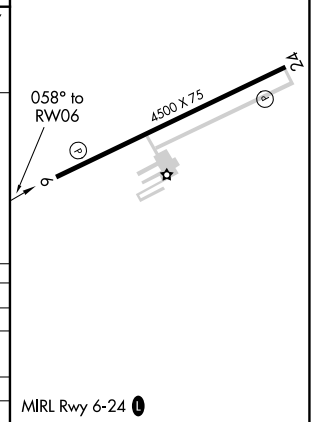
NC-3, 07 SEP 2023 to 05 OCT 2023

NC-3, 07 SEP 2023 to 05 OCT 2023

|          |          |
|----------|----------|
| ELEV 933 | TDZE 933 |
|----------|----------|



| CATEGORY     | A      | B           | C | D  |
|--------------|--------|-------------|---|----|
| LPV DA       | 1236-1 | 303 (400-1) |   | NA |
| LNAV/VNAV DA | 1488-2 | 555 (600-2) |   | NA |
| LNAV MDA     | 1420-1 | 487 (500-1) |   | NA |
| CIRCLING     | 1520-1 | 587 (600-1) |   | NA |



MIRL Rwy 6-24 0