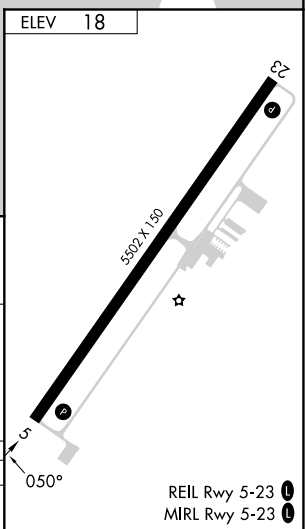
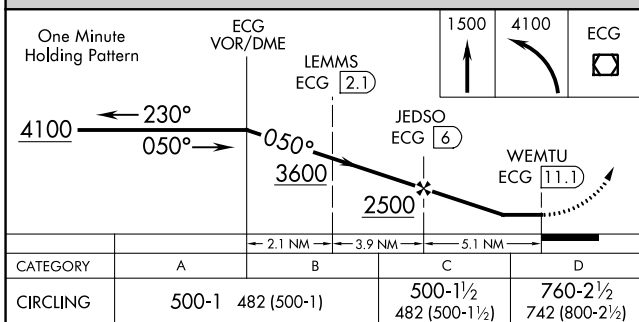
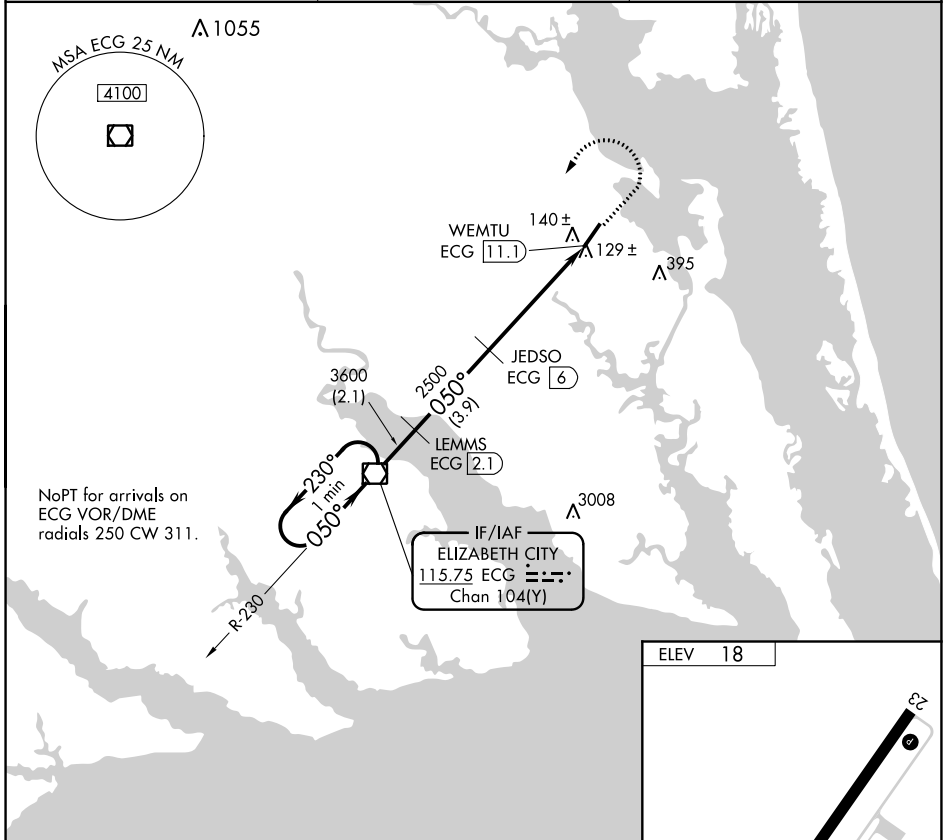


VOR/DME ECG 115.75 Chan 104(Y)	APP CRS 050°	Rwy Idg TDZE Apt Elev	N/A N/A 18
--	------------------------	-----------------------------	---------------------------------------

VOR/DME-A
CURRITUCK COUNTY RGNL (ONX)

When local altimeter setting not received, use Oceana NAS/Apollo Soucek altimeter setting and increase all MDA 60 feet.
 MISSED APPROACH: Climb to 1500 then climbing left turn to 4100 direct ECG VOR/DME and hold, continue climb-in-hold to 4100.
 Procedure NA when tethered balloon located approximately 11.4 NM southwest of airport is flying.

AWOS-3 119.775	OCEANA APP CON 123.9 266.8	CTAF 122.9 0
--------------------------	--------------------------------------	------------------------



SE-2, 07 SEP 2023 to 05 OCT 2023

SE-2, 07 SEP 2023 to 05 OCT 2023