

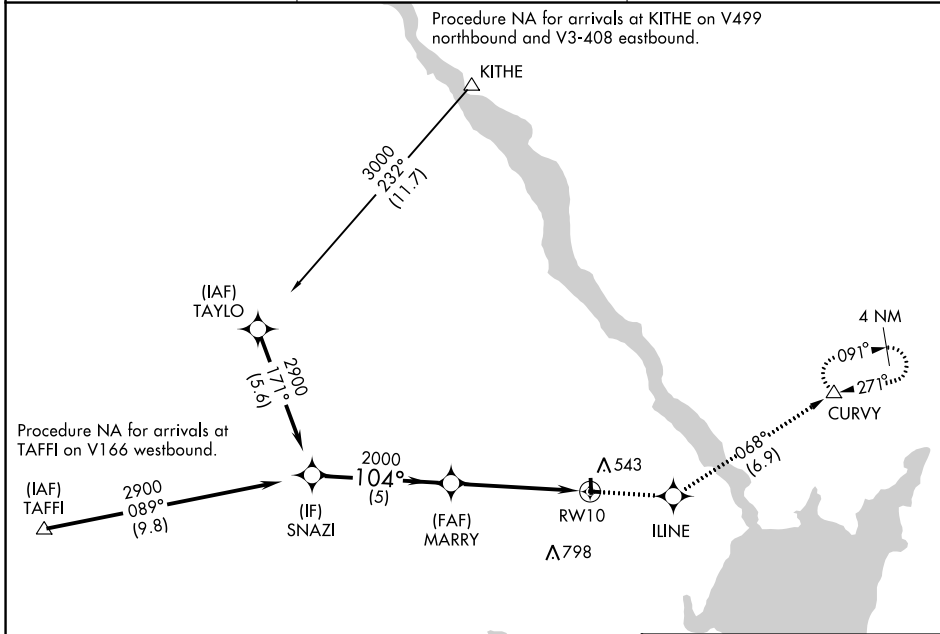
APP CRS	Rwy Idg	N/A
104°	TDZE	N/A
	Apt Elev	412

RNAV (GPS)-B

HARFORD COUNTY (ØW3)

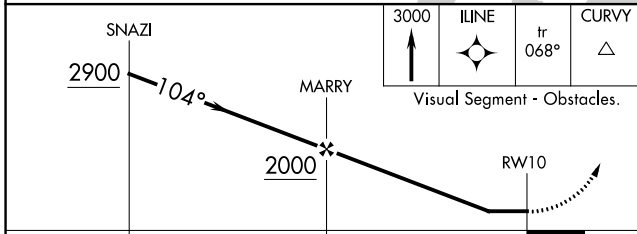
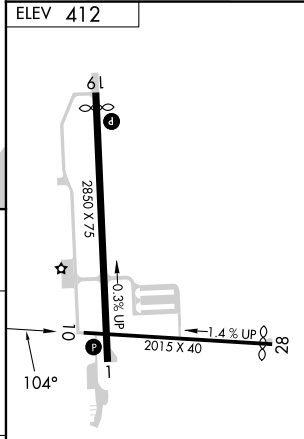
RNP APCH.		MISSED APPROACH: Climb to 3000 direct ILINE and on track 068° to CURVY and hold, continue climb-in-hold to 3000.
▼ ▲ NA	Rwy 1, 19, 10 and 28 helicopter visibility reduction below 1 SM NA. Use Phillips AAF altimeter setting; when not received use Baltimore/Washington Intl Thurgood Marshall altimeter setting and increase MDA 60 feet. Procedure NA at night.	

KAPG ATIS ★ 124.425	POTOMAC APP CON 125.525 291.625	UNICOM 122.8 (CTAF) 0
-------------------------------	-------------------------------------------	---------------------------------



NE-3, 07 SEP 2023 to 05 OCT 2023

NE-3, 07 SEP 2023 to 05 OCT 2023



CATEGORY	A	B	C	D
CIRCLING	960-1 548 (600-1)		NA	

MIRL Rwy 1-19 0
REIL Rws 1 and 19 0
REIL Rws 10 and 28